



Hi, I am EeeBee



Simile

Learning Outcomes

- Students will enhance their vocabulary by learning new words and their meanings.
- They will understand the use of synonyms, antonyms, and homophones.
- They will learn word formation through prefixes, suffixes, and root words.
- They will apply newly learned words effectively in speaking and writing.

Simile

A simile is a form of figurative language that makes direct comparisons between one thing and another with similar qualities.

A simile is a comparison usually introduced by like or as.

Examples :

as busy as a bee

as cold as ice

as dark as night

as light as a feather

as brave as a lion

as cunning as a fox

as hungry as a wolf

as sharp as a knife

Match the words in **column A** with those in **column B** to form meaningful similes.



Column A

as tall as

as strong as

as black as

as busy as

as slow as

as crafty as

as fast as

as industrious as

as loud as

as blind as

Column B

a bat

a cheetah

a giraffe

a fox

coal

thunder

an ox

a snail

a bee

an ant





Learning Outcomes

- Students will develop the ability to understand and interpret written texts.
- They will learn to identify key ideas, details, and themes in passages.
- They will apply critical thinking to analyze and summarize written material effectively.

1. Read the following passage carefully and answer the questions that follow.



Skills/Level
READING/A2



The great one horned rhino is commonly found in Nepal, Bhutan, Pakistan and in Assam, India. It is confined to the tall grasslands and forests in the foothills of the Himalayas. The Indian Rhinoceros can run at speeds of up to 25 mph (40 km/h) for short periods of time. It is also an excellent swimmer. It has excellent sense of hearing and smell, but relatively poor eyesight. However, no more than 2,000 remain in the wild, with only two populations containing more than 100 rhinos: Kaziranga National Park in Assam, India (1,200) and Chitwan National Park (CNP), Nepal (600).

Indian Rhinos are brownish-grey in colour and are hairless. They have knobby skin that appears to be armor-plated. A single horn sits on top of their snout, and their upper lip is semi-prehensile. The largest of the Asian rhinos, male Indian rhinos weigh approximately 2,200 kg and range in height from 170 to 186 cm and are 368 to 380 cm long. Their horn can grow to 45 cm long.



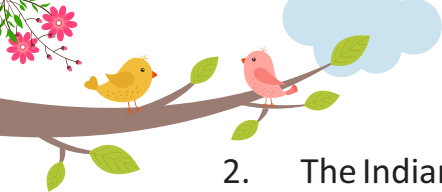
The Indian and Nepalese governments have taken major steps toward Indian Rhinoceros conservation with the help of the World Wildlife Fund (WWF). The Kaziranga National Park and Manas National Park in Assam, Pobitora Reserve Forest in Assam (having the highest Indian rhino density in the world), Orang National Park of Assam, Laokhowa Reserve Forest of Assam having a very small population and Royal Chitwan National Park in Nepal are homes for this endangered animal.

A. Tick (✓) the correct option.

1. What about the Indian one-horned rhino is not true?

- (a) It can run at speed of up to 40 km/h.
- (b) It's an excellent swimmer
- (c) It has a great eyesight

☐
☐
☐



2. The Indian Rhinoceros have excellent senses of :

(a) hearing ☐

(b) smell ☐

(c) both (a) & (b) ☐

3. Indian Rhinos are _____ in colour.

(a) blue ☐

(b) brownish-grey ☐

(c) pink ☐

2. Read the poem carefully and answer the questions that follow.

Ah, these jasmines, these white jasmines!

I seem to remember the first day when I filled my hands
with these jasmines, these white jasmines.

On grey mornings of rain

I have crooned many an idle song.

I have worn round my neck the evening wreath of
Bakulas woven by the hand of love.

Yet my heart is sweet with the memory of the first fresh jasmines
that filled my hands when I was a child.



Skills/Level
READING/A2



B. Tick (✓) the correct option.

1. The jasmines, which the poet is talking about are:

(a) white ☐

(b) blue ☐

(c) red ☐

2. Bakulas are:

(a) a variety of small precious stones ☐

(b) arrangement of flowers in a circle ☐

(c) leaves ☐

3. The word croon means to sing:

(a) loudly ☐

(b) angrily ☐

(c) softly and gently ☐

