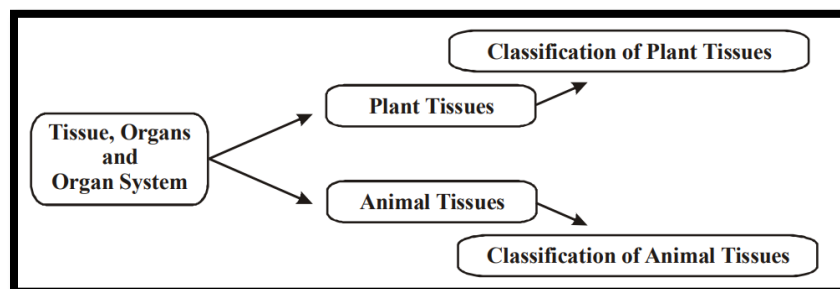


# TISSUES

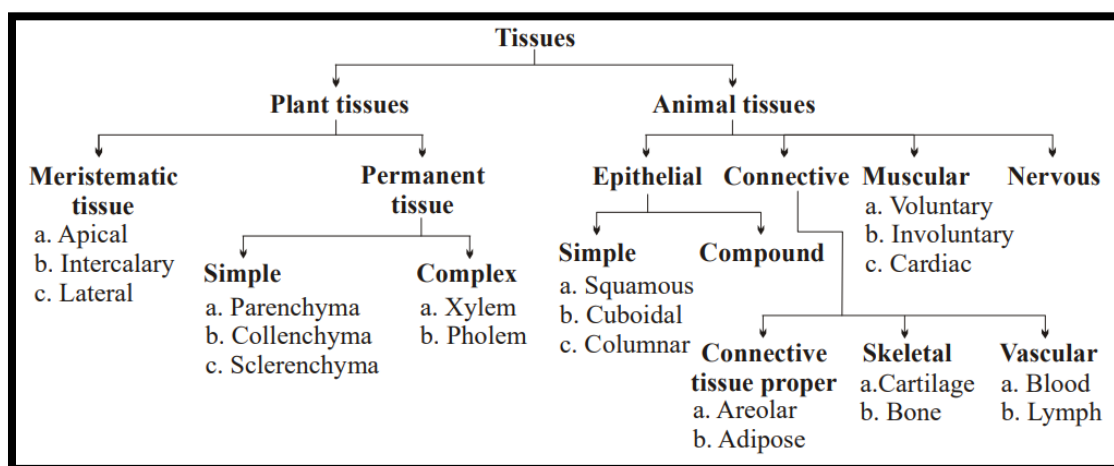
## INTRODUCTION OF TISSUE



### INTRODUCTION •

Multicellularity is the most important characteristics of complex organism like humans, mango, penicillium etc.

- An organism is multicellular when it contains many cells.
- Cells have different structure, shape, size and origin. To group them we must have a fundamental knowledge of their functions also.
- Group of cells that have common origin, similar structure and perform a definite function is called tissue.



Level of organization : – Cell → Tissue → Organ → Organ system → Organism

- Founder of Histology (study of tissue) is BICHAT.
- All plant cells are totipotent in nature. Totipotency is the ability of cells to produce complete new organism of its own kind. In human beings, stem cells are totipotent