

Flower



Flower is a colourful and attractive part of plant. However, they differ in their shape, size, colour and smell. They contain the male and female reproductive parts and hence they are known as the reproductive organ of a plant. Let us read about the parts of a flower:

Parts of a Flower

A flower consists of several rings or whorls of structures. They are as follows:

1. Sepals

Sepals provide protection to the bud before it blooms and later protect fruits. These form the outermost ring generally green in colour.



2. Petals

These form the second ring generally bright coloured and scented. These attract insects that help in pollination. It also protects the inner structure of a flower.



Flower

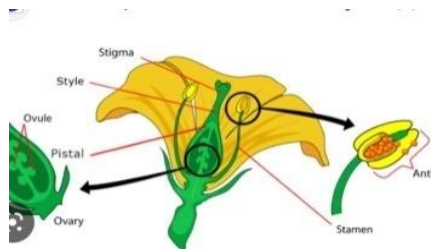


3. Stamens

These form the third ring and are the male reproductive organ of the flower. Each stamen has a bag like structure called anther and a long structure called filament. Anther produces pollen grains that help in reproduction whereas filament provides support to the anther.

4. Pistil

These form the fourth ring. A pistil is the female part of the flower consists of three parts. These are ovary, stigma, style.



Ovary: It is the swollen base of the pistil that consist the ovules.

Stigma: It is the sticky part at the tip of the style which makes the pollen grains from the pollen sac of the stamen stick to it and helps in fertilization of the flower.

Style: It is the extended stalk which connects the ovary to the stigma.



Pollination

The stigma receives the pollen grains which germinate on it. Each pollen grain grows into a tube, called pollen tube. The transfer of pollen grains from anther to the stigma is called pollination. Pollen tube grows through the style to reach the ovary bears small ovules and the pollen grains fuse with ovules to form seeds.

Flower



Functions of a Flower

It is the organ of reproduction in plants and it grows into the fruit and seed.

Flowering plants are grown in houses, gardens, parks and road sides for their brilliant colours, beautiful shapes and fragrance. Flowers of some plants are also used for interior decoration. Such plants are known as ornamental plants.

Flowers yield perfumes or scents. The common flowers are rose, jasmine, gerbera and lavender.

Cloves, so often used as a spice and in medicines, are the dried flower buds of the clove plant.

