

A Journey Through Different Habitat

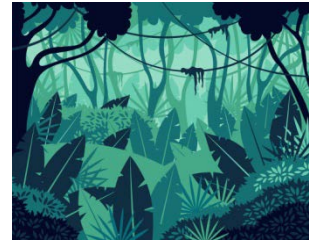


Tropical Rainforest:

Location: Amazon Basin (South America), Congo Basin (Africa), Southeast Asia.

Characteristics: High temperatures, heavy rainfall, dense vegetation.

Biodiversity: Rich with diverse plant and animal species, including jaguars, toucans, and countless plant species.

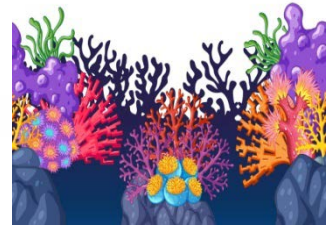


Coral Reef:

Location: Found in warm, shallow waters around the world, particularly in the Indo-Pacific.

Characteristics: Clear, warm water, and an abundance of coral formations.

Biodiversity: Home to thousands of species, including colorful fish, corals, and marine invertebrates.

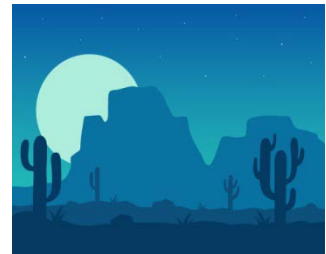


Desert:

Location: Various deserts globally, such as the Sahara (Africa), Sonoran (North America), and Gobi (Asia).

Characteristics: Extreme aridity, high temperatures, and sparse vegetation.

Biodiversity: Despite harsh conditions, many species have adapted to survive in deserts, including camels, cacti, and desert rodents.



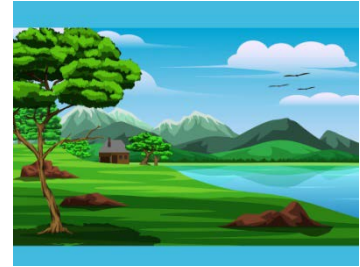


Grassland:

Location: Found on every continent except Antarctica.

Characteristics: Wide-open spaces, grasses dominate the landscape, and variable precipitation.

Biodiversity: Home to large herds of herbivores like bison and zebras, as well as predators like lions and wolves.



Tundra:

Location: Arctic and alpine regions of North America, Europe, and Asia.

Characteristics: Cold temperatures, permafrost, and limited vegetation.

Biodiversity: Species like reindeer, Arctic foxes, and migratory birds adapt to the harsh tundra environment.

Mountain:

Location: Mountain ranges globally, including the Himalayas, Andes, and Rocky Mountains.

Characteristics: High altitudes, varied temperatures, and diverse terrain.

Biodiversity: Species vary with altitude, from snow leopards and yaks in high mountain regions to forests and meadows at lower elevations.





Wetland:

Location: Found on every continent, often near rivers, lakes, and coastlines.

Characteristics: Waterlogged soils, diverse plant life, and vital for water purification.

Biodiversity: Home to amphibians, waterfowl, and a variety of plant and insect species.

Oceanic:

Location: Covers over 70% of the Earth's surface, with varying depths and temperatures.

Characteristics: Vast and interconnected ecosystems, ranging from surface waters to deep trenches.

Biodiversity: Marine life includes fish, whales, dolphins, and an array of microscopic organisms.

