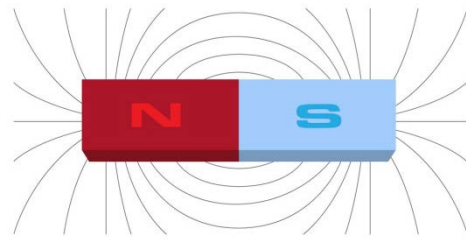


## Poles of Magnet



### Poles of magnet:

The two ends of a bar magnet are called poles of a magnet. One is the north pole and the other is the south pole.

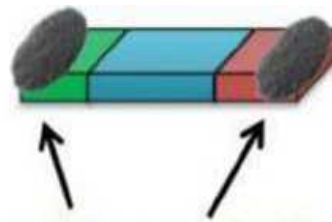


### Example:

If you dip a magnet in a pool of iron filing and pull it out, you will observe most iron filings get stuck to the two ends of the bar magnet. The regions of the magnet where more iron filing sticking to it are called the poles of the magnet.



Magnet dipped into iron filing



Iron filing got stuck to the magnet