

Body Parts of an Insect

What is an Insect?

Have you ever seen an ant marching in a line, a butterfly fluttering by, or a ladybug on a leaf? These are all insects. An insect is a special type of small animal. To be called an insect, it must have a body that is divided into three main parts.

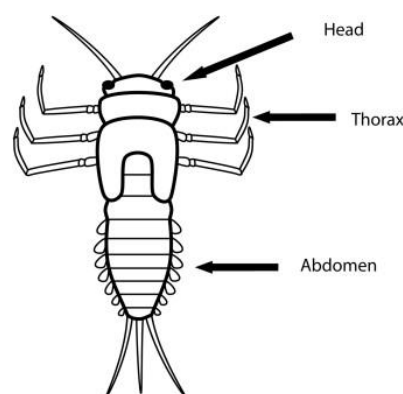


- **Rule of Thumb:** Most insects have 3 body parts, 6 legs, and 2 antennae.

The Three Main Body Parts

Think of it like a train with three cars connected. Every insect has these three main sections.

- Head (The front part)
- Thorax (The middle part)
- Abdomen (The end part)



i. The Head: The Control Center

The head is where the insect's brain is. It has very important parts that help the insect see, feel, and eat.

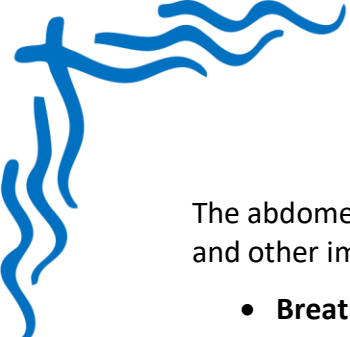
- **Eyes:** Most insects have compound eyes. This means their eyes are made of many tiny little eyes! This helps them see in many directions at once.
- **Antennae (or Feelers):** These are two long feelers on top of the head. Insects use them to touch, smell, and even taste things around them. It's how they find food and sense danger.
- **Mouthparts:** An insect's mouth is designed for its food. A butterfly has a mouth like a straw to sip nectar, while a grasshopper has a mouth that can chew leaves.

ii. The Thorax: The Engine Room

The thorax is the middle part of the insect. It's where all the movement happens! All of the insect's legs and wings are attached here.

- **Six Legs:** This is a very important rule! An insect always has six legs, and they are always attached to the thorax.
- **Wings:** If an insect can fly, its wings are attached to the thorax. Some insects have two wings (like a fly) and some have four (like a dragonfly). Some insects, like ants, don't have wings at all.

iii. The Abdomen: The Back End



The abdomen is the last section of the insect's body. It holds the insect's stomach, heart, and other important organs.

- **Breathing:** Insects don't have noses like we do. They breathe through tiny little holes on the sides of their abdomen called spiracles.
- **Digestion:** This is where the insect's food is broken down.
- **Reproduction:** The abdomen is also where female insects make their eggs.

Key Points & Important Terms

- **Insect:** A small animal with three body parts (head, thorax, abdomen), six legs, and two antennae.
- **Head:** The front part with eyes, antennae, and mouth.
- **Thorax:** The middle part where the 6 legs and wings are attached.
- **Abdomen:** The end part that helps with breathing and digestion.
- **Antennae:** Two "feelers" on the head used for touch and smell.
- **Compound Eyes:** Large eyes made of many tiny lenses.
- **Exoskeleton:** The hard, outer shell that protects an insect's body, like a suit of armor.

Detailed Example: Let's Look at a Ladybug!

Let's use our knowledge to identify the parts of a ladybug.

Question: Can you find the head, thorax, and abdomen on a ladybug? Where are its legs?

Solution:

1. **Head:** The small black part at the very front. You can see its two short antennae sticking out.
2. **Thorax:** The part right behind the head. It's also black. If you look closely, you can see all six legs are attached to this middle section.
3. **Abdomen:** This is the big, round, red part with black spots. It's protected by the hard wing covers. The ladybug's flying wings are folded underneath.

Practice Problems

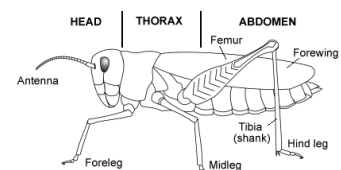
Problem 1: Label Me! Look at the drawing of the grasshopper below. Use the words from the Word Bank to label its parts.

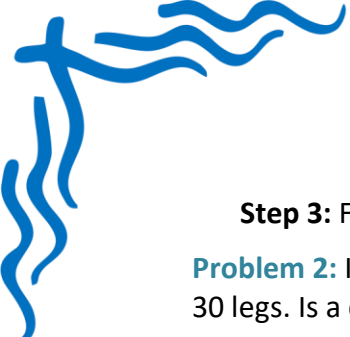
Word Bank: Head, Thorax, Abdomen, Leg, Antenna

Solution:

Step 1: Find the front part with the eye and feelers. That is the Head. The feeler is the Antenna.

Step 2: Find the middle part where the legs are attached. That is the Thorax. The things it uses for walking are its Legs.





Step 3: Find the long end part. That is the Abdomen.

Problem 2: Insect Detective A centipede has a long body with many sections and has over 30 legs. Is a centipede an insect? Why or why not?

Solution:

Step 1: Think about the insect rules. How many body parts should an insect have?
(Answer: 3)

Step 2: How many legs should an insect have? (Answer: 6)

Step 3: Compare the centipede to the rules. A centipede has many body sections, not 3. It has over 30 legs, not 6.

Conclusion: A centipede is NOT an insect because it does not have 3 body parts and 6 legs.

Summary of Main Concepts

- To remember if an animal is an insect, just check for the Insect Rules!
- **3 Main Body Parts:** Head, Thorax, and Abdomen.
- **6 Legs:** Always attached to the thorax.
- **2 Antennae:** On the head for sensing the world.
- **Exoskeleton:** A hard, protective outer body.