

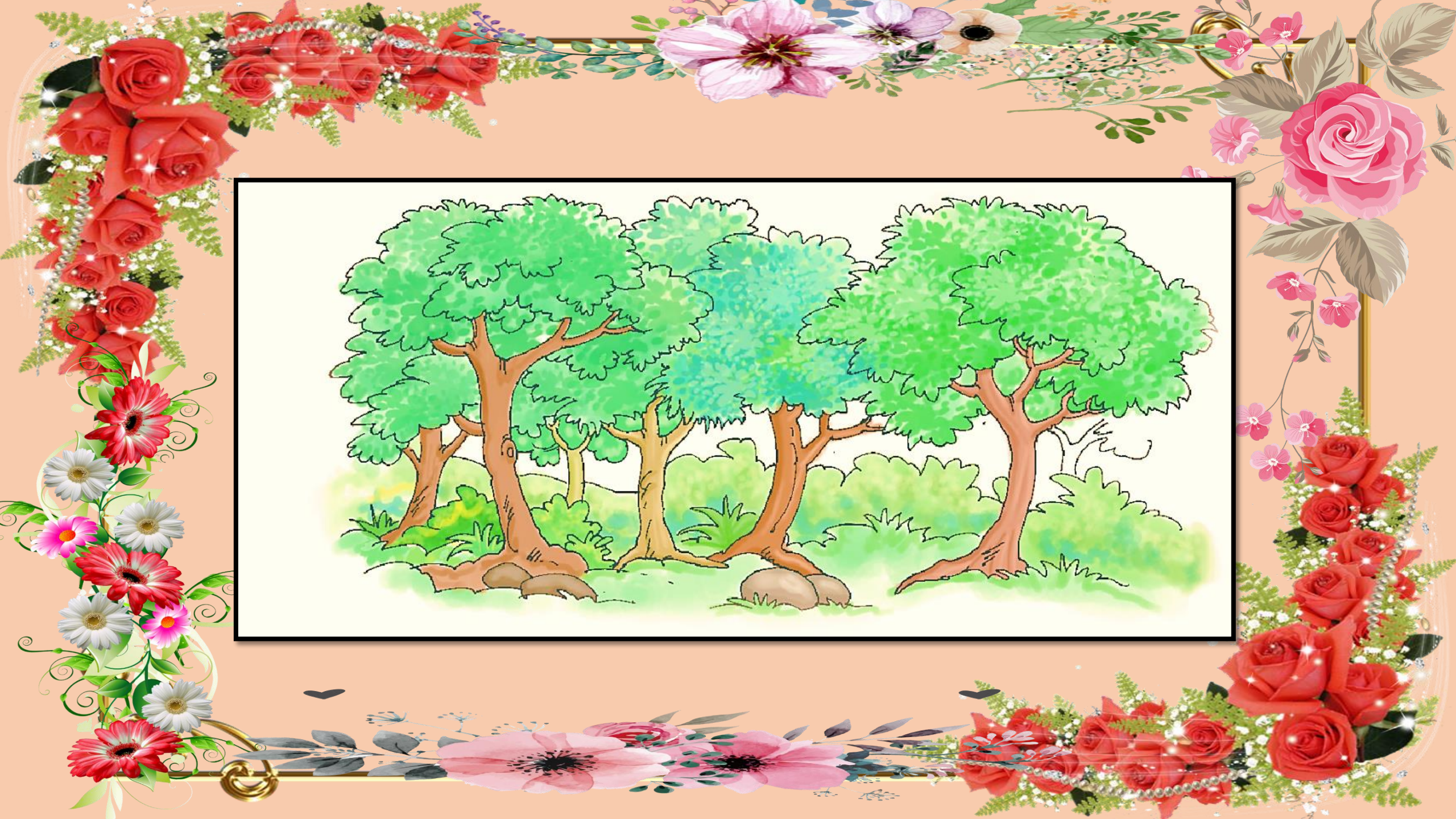
Plants Notes





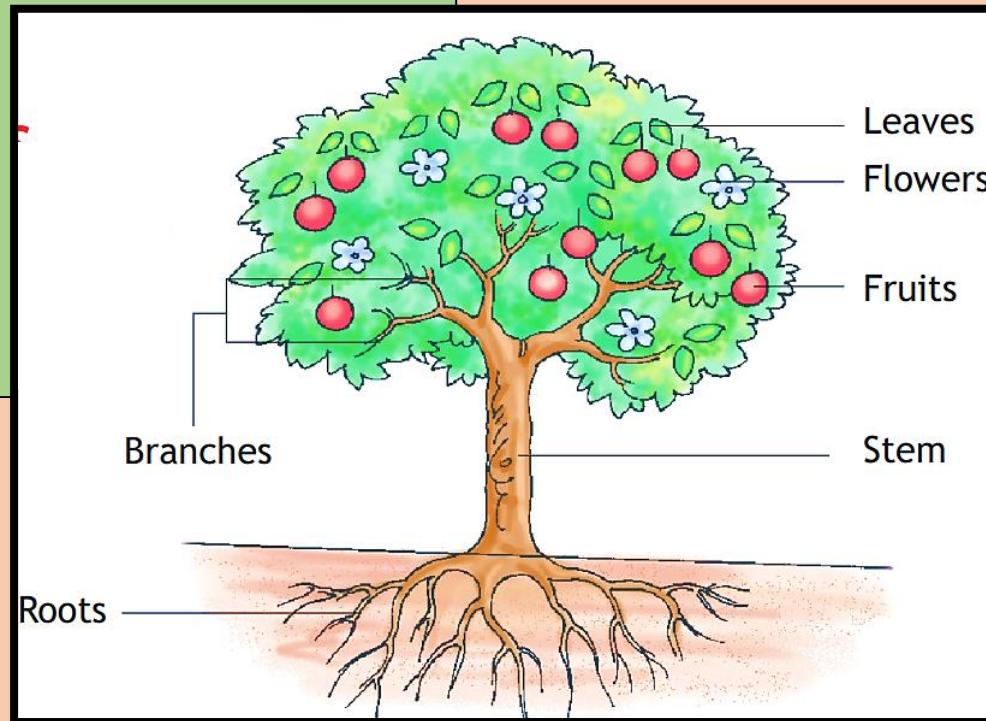
INTRODUCTION

We find plants all around us. They need sunlight, water, air and soil to grow. They are very important for us.



PARTS OF PLANTS

Roots, stem, branches, leaves, flowers and fruits are the main parts of a plant.





TYPES OF PLANTS

Trees

Trees are big plants. They have strong trunk.

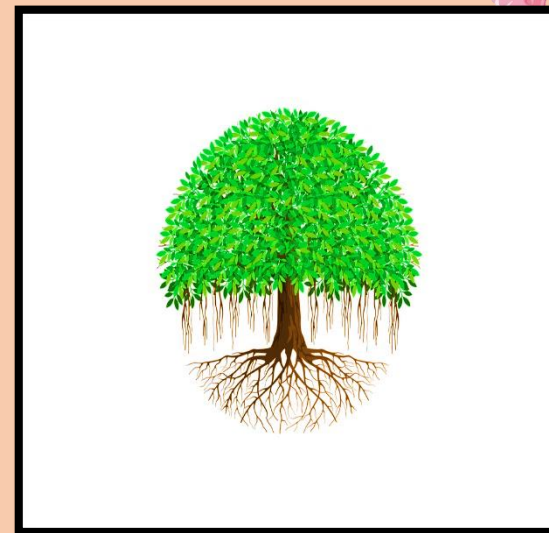
Example: Coconut tree, Mango tree, Banyan tree.



Coconut tree



Mango tree

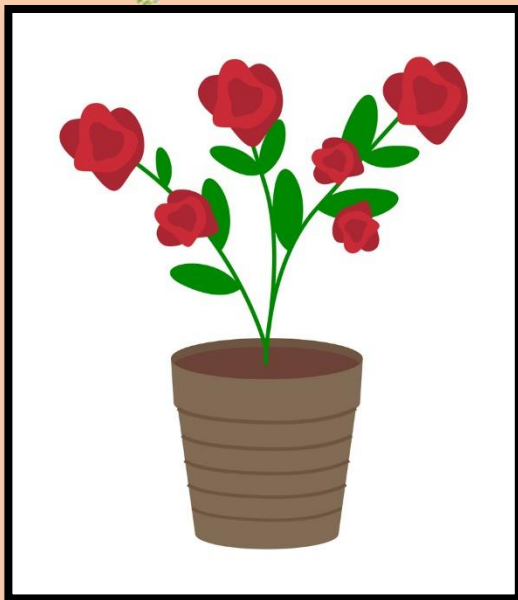


Banyan tree



Shrubs

Shrubs are smaller plants but they have hard stems with several branches. Example: Rose, Tulsi, Henna.



Rose



Tulsi



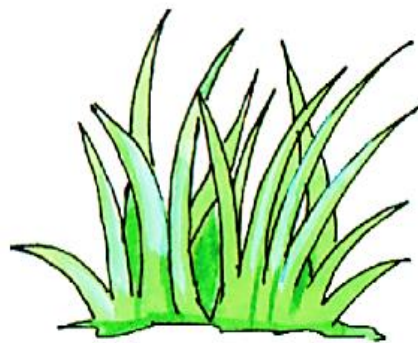
Henna



Herbs

Herbs are small plants and their stems are soft and green.

Example: Grass, Spinach, Lily.



Grass



Spinach



Lily



Fact File

- **Roots always grow underground in soil.**
- **Plants which grow in water are called water plants, e.g. water lily, lotus etc.**



Things to Remember

- We obtain most of our food from plants.
- We can identify different plants by their flowers, leaves, fruits, trunk etc.