


PLANTS AROUND US

Notes





There are many kinds of plants around us. They are of different shapes and sizes. Some plants are tall and some are small. Most plants have leaves. The leaves are usually green.



TREES:

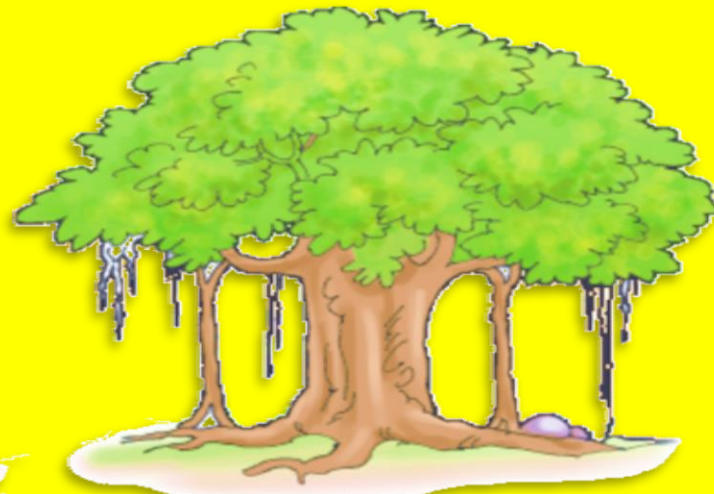
Big and tall plants are called Trees. They have hard and strong stem called trunk. All trees have branches. Trees live for many years. Coconut, Mango, Neem, Banyan are the examples of trees.



Coconut tree



Mango tree



Banyan tree

Shrubs

Some plants are smaller than trees and are bushy. They have hard stem. They are called Shrubs. Rose, Tulsi, Mehndi are the examples of shrubs.



Rose



Tulsi



Mehndi

Climbers

Some plants are very weak. They cannot stand straight on their own. They need support to stand erect. They are called Climbers.

Grapevine, Pea, Money plant are the examples of the climbers.



Grapevine



Pea plant



Money plant

Creepers

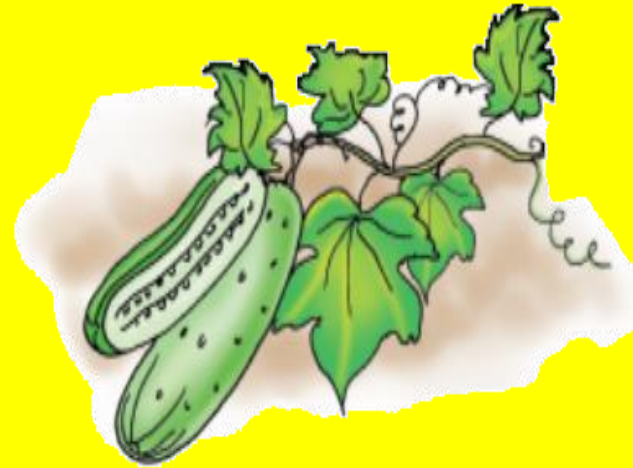
There are some plants which are very weak. They have weak and soft stem. They creep on the ground. They cannot stand straight. They are called Creepers. Watermelon, Pumpkin, Cucumber are the examples of creepers.



Watermelon



Pumpkin



Cucumber

Water Plants

Some plants grow only in the water. They cannot grow on the land. The water plants are also called aquatic plants. The water plants may be fixed or floating. Water Lily, Lotus, Jalkhumbi are the examples of water plants.



Water Lily



Lotus



Jalkhumbi

A vibrant illustration of four children running happily across a green field. In the background, there is a bright sun, a rainbow, and fluffy white clouds. The children are dressed in casual summer clothes and are running towards the right side of the frame.

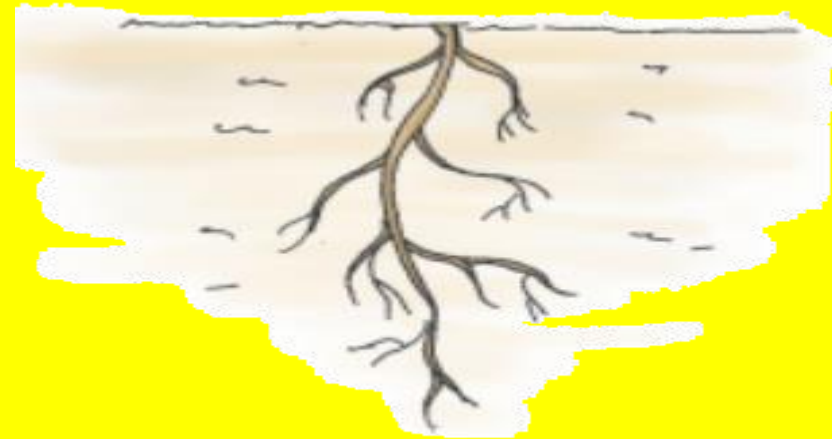
PARTS OF A PLANT

A plant has many parts. Roots, Stem, Branches, Leaves, Flowers, Fruits and Seeds are the main parts of a plant.

The root is the underground part of the plant while stem, branches, leaves, flowers, fruits and seeds are the aerial parts of the plant.

Root

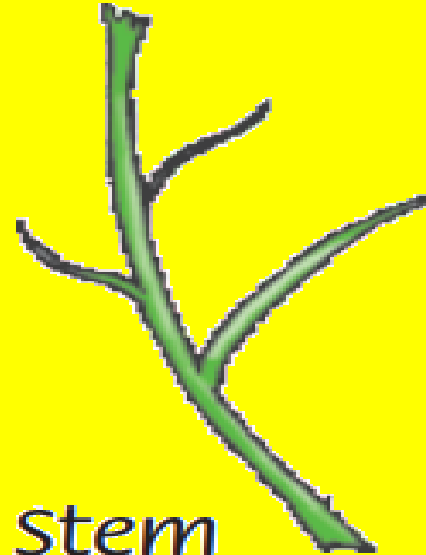
It remains under the soil. It gives support to the plant. It absorbs nutrients and water from the soil.



Root

Stem

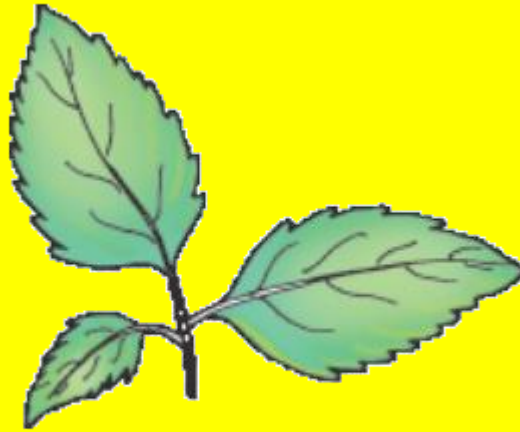
It is the main part of a plant. It bears the branches and holds all other parts of the plant.



Stem

Leaves

**These are green in colour and prepare food for the plant.
They are numerous.**



Leaves

Flowers

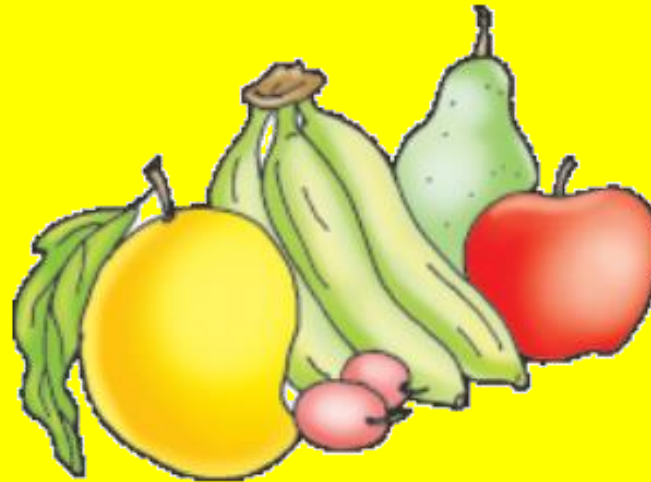
**They are found in different colours, shapes and sizes.
They develop further into fruits and seeds.**



Flowers

Fruits

Fruits are developed from flowers. They bear seeds inside them. They are the most common edible part of the plant.



Fruits

Seeds

Seeds are smaller than fruits. They grow into new plants after germination.



Seeds