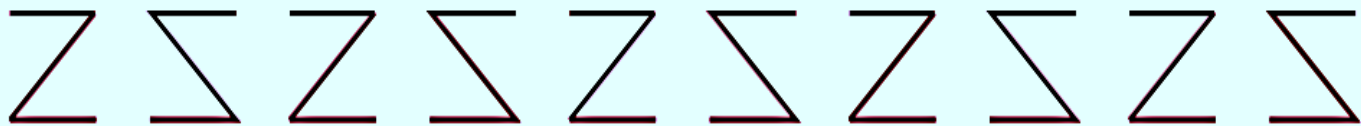
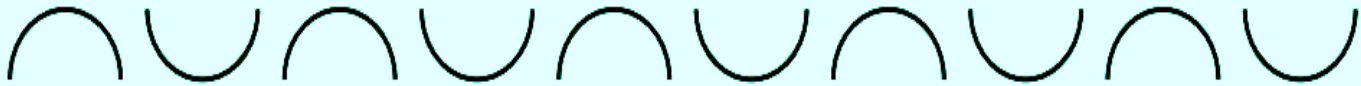


Patterns Notes



Geometrical Patterns

Observe each line of figures carefully.



These are simple figures.

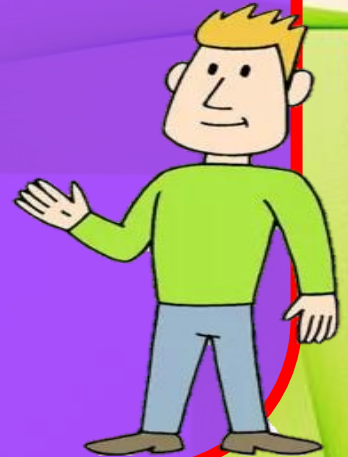
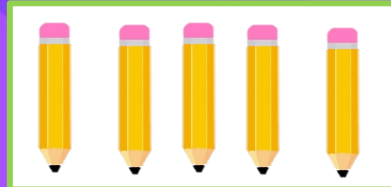
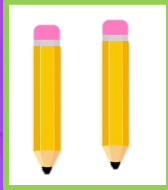
Artists have drawn them in a **pattern** .

Similarly, you can see various such figures drawn in the patterns on the surface of temples, mosques, houses, clothes, household articles, etc.



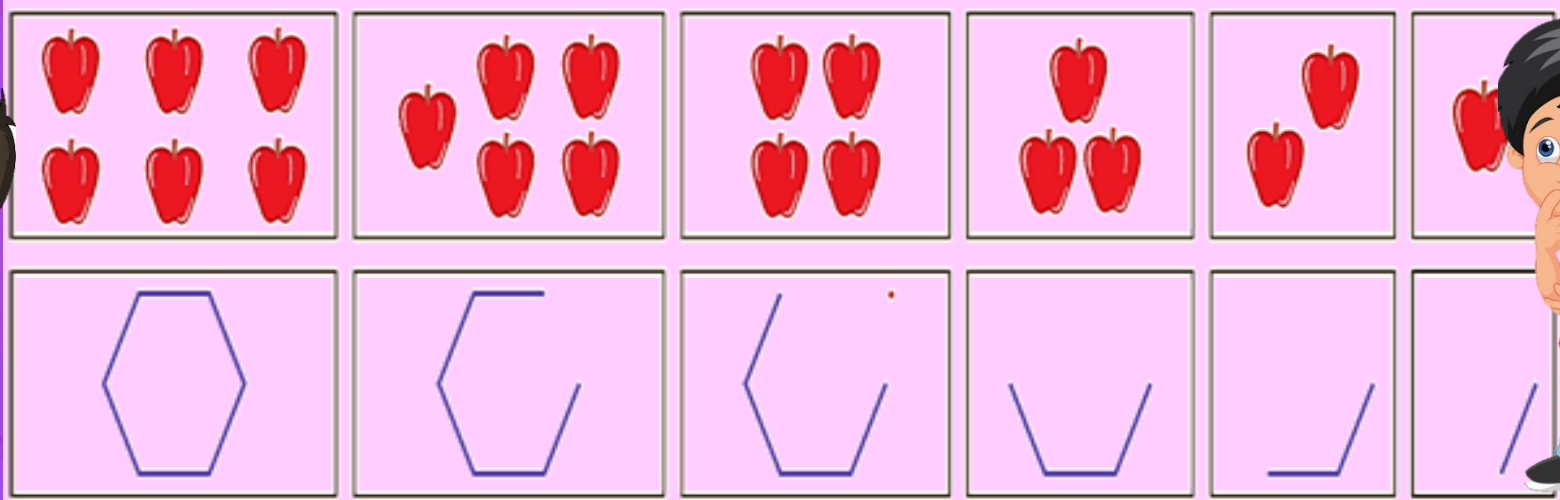
INCREASING PATTERNS

Read and observe the following increasing patterns carefully :



DECREASING PATTERNS

Read and observe the following decreasing patterns carefully :



Number Patterns

You have already seen some patterns in pictures.
Now, let us see some patterns in numbers too.



INCREASING PATTERNS

See the numbers given below :

2, 4, 6, 8, 10, 12, 14,

What do you observe ?

This is a increasing (growing) pattern.

2 is added to each number to get the next number.



DECREASING PATTERNS

Look at the following numbers.

25, 22, 19, 16, 13, 10,

What do you observe ?

This is a decreasing pattern.

3 is subtracted from each number to
get the next number.



Even and Odd Numbers

Look at the numbers from 1 to 100 in the table.

1	2	3	4	5	6	7	8	9	10
11	12	13	14	15	16	17	18	19	20
21	22	23	24	25	26	27	28	29	30
31	32	33	34	35	36	37	38	39	40
41	42	43	44	45	46	47	48	49	50
51	52	53	54	55	56	57	58	59	60
61	62	63	64	65	66	67	68	69	70
71	72	73	74	75	76	77	78	79	80
81	82	83	84	85	86	87	88	89	90
91	92	93	94	95	96	97	98	99	100



EVEN NUMBERS

Half of the numbers in the table given above are in green .

These are

2, 4, 6, 8, 10, 12, , 94, 96, 98, 100.

These numbers end with 0 or 2 or 4 or 6 or 8.

These are called **even numbers** .



EVEN NUMBERS

This means that even numbers have 0 or 2 or 4 or 6 or 8 .

at their one places.

Even numbers are those numbers which are divisible by 2 .



ODD NUMBER

Now, let us look at the other half numbers (in red)
in the table.

These are

1, 3, 5, 7, 9, 11, 13, , 93, 95, 97, 99.



ODD NUMBER

These numbers end with 1 or 3 or 5 or 7 or 9.

These are called **odd numbers** .

This means that **odd numbers** have 1 or 3 or 5 or 7 or 9 **at their ones places**

**Odd numbers are those numbers
which are not divisible by 2 .**



Put circle around the **odd** and box around the **even** numbers in each row :

2	35	18	36	19	113	71	10	181	282	58	361
---	----	----	----	----	-----	----	----	-----	-----	----	-----

312 291 559 66 259 760 615 518 898 402 29 999

61 79 719 60 918 358 910 205 500 13 46 718

