



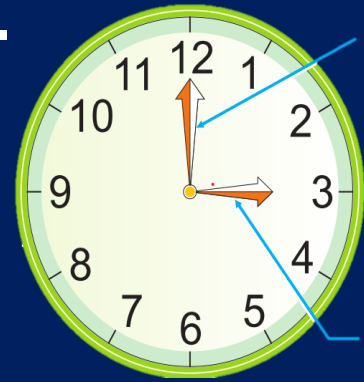
Measures of Time

Notes

MEASURES OF TIME

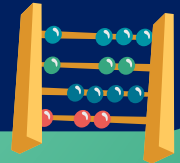
Clock

Observe the face of the clock.
Numbers from **1** to **12** are
given on it.



Minute
hand

Minute
hand



1

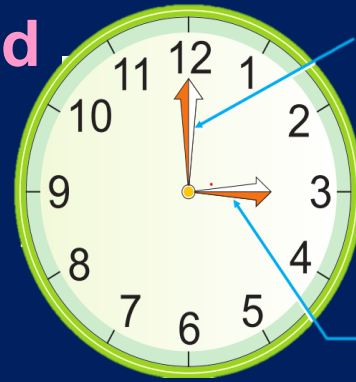
2

3

4

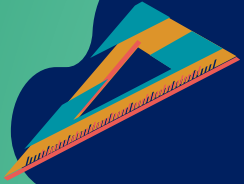
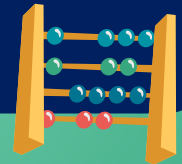


The clock has two hands.
The long hand is the **minute hand**.
It indicates time in minutes .



Minute hand

Minute hand



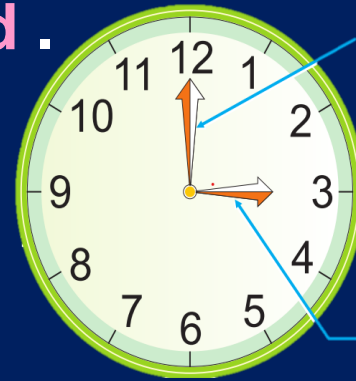
4

1

2

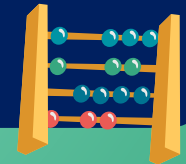
3

The short hand is the **hour hand** .
It indicates time in hours .



Minute hand

Minute hand



4

1

2

3

Now, look at the following clocks to know the times :

After every hour, the minute hand always points to 12.



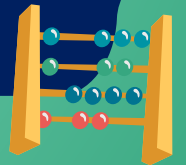
The minute hand is at 12. The hour hand is at 7. The time is **7 O'clock**

1

2

3

4





Now, look at the following clocks to know the times :

After every hour, the minute hand always points to 12.



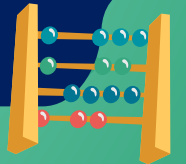
The minute hand is at 12. The hour hand is at 3. The time is **3 O'clock**

1

2

3


4





Now, look at the following clocks to know the times :

After every hour, the minute hand always points to 12.



The minute hand is at 12.
The hour hand is at 3.
The time is **3 O'clock**



The minute hand is at 12.
The hour hand is at 7. The
time is **7 O'clock**



9 O'clock

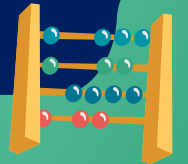


1

2

3

4



Write the time shown on each clock :



4 O'clock

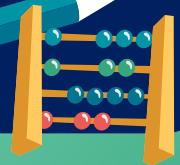


1

2

3

4



HALF - HOUR

The minute hand is at 6.
The hour hand is
between 1 and 2.
The time is **half-past**.



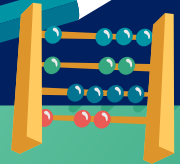
Half-past 6

1

2

3

4



HALF - HOUR



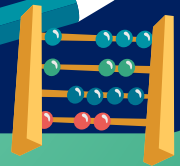
The minute hand is at 6.
The hour hand is between 3 and 4.
The time is **half-past 3**.

1

2

3

4



HALF - HOUR



Half-past 7

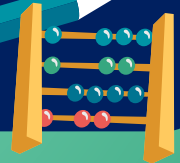
At the half-hour, the minute hand always points to 6.

1

2

3

4





Terms To Remember

- The hour-hand of a clock takes one hour to move from one numeral to the next.
- The minute-hand takes one hour to come back to the same numeral.

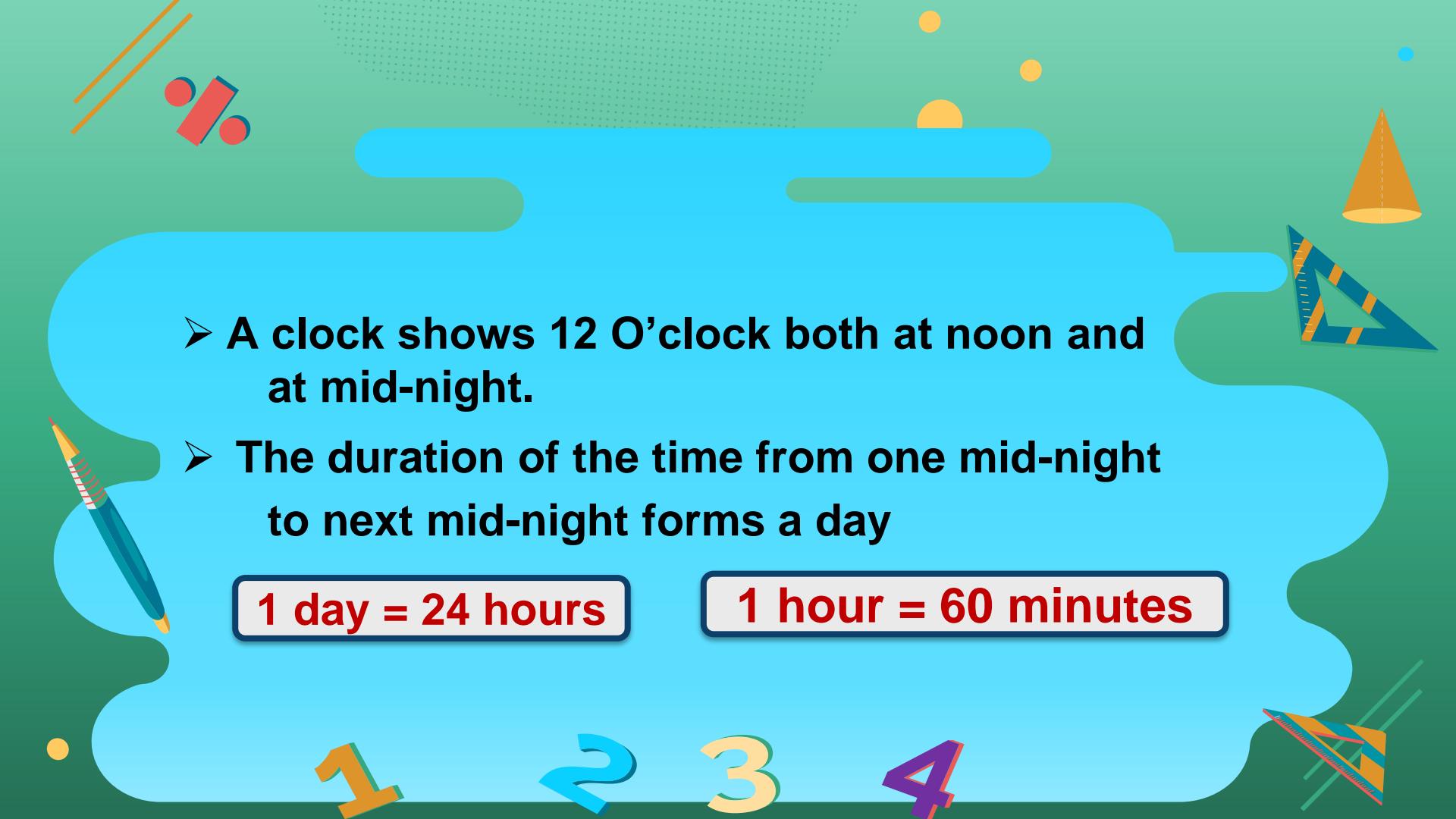
One hour = 60 minutes

1

2

3

4

- 
- A clock shows 12 O'clock both at noon and at mid-night.
 - The duration of the time from one mid-night to next mid-night forms a day

1 day = 24 hours

1 hour = 60 minutes

1

2

3

4

Days of a Week

MONDAY

TUESDAY

WEDNESDAY

THURSDAY

FRIDAY

SATURDAY

SUNDAY

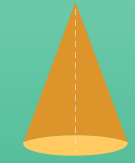
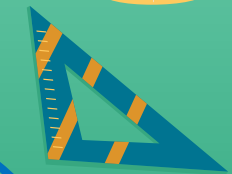
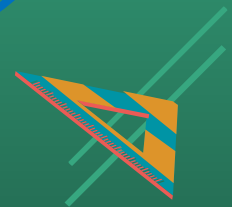
These seven days make a week.



1

3

4





First day

Second day

Third day

Fourth day

Fifth day

Sixth day

Seventh day

of the week is

of the week is

of the week is

of the week is

of the week is

of the week is

of the week is

Monday.

Tuesday.

Wednesday.

Thursday.

Friday.

Saturday.

Sunday.

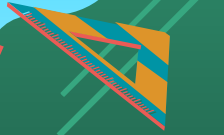


1

2

3

4



Calendar

January 2022

Sunday	Monday	Tuesday	Wednesday	Thursday	Friday	Saturday
26	27	28	29	30	31	1
2	3	4	5	6	7	8
9	10	11	12	13	14	15
16	17	18	19	20	21	22
23	24	25	26	27	28	29
30	31	1	2	3	4	5

Calendar

February 2022

Sunday	Monday	Tuesday	Wednesday	Thursday	Friday	Saturday
30	31	1	2	3	4	5
6	7	8	9	10	11	12
13	14	15	16	17	18	19
20	21	22	23	24	25	26
27	28	1	2	3	4	5

1

2

3

4

March 2022

Sunday	Monday	Tuesday	Wednesday	Thursday	Friday	Saturday
27	28	1	2	3	4	5
6	7	8	9	10	11	12
13	14	15	16	17	18	19
20	21	22	23	24	25	26
27	28	29	30	31	1	2

1

2

3

4

April 2022

Sunday	Monday	Tuesday	Wednesday	Thursday	Friday	Saturday
27	28	29	30	31	1	2
3	4	5	6	7	8	9
10	11	12	13	14	15	16
17	18	19	20	21	22	23
24	25	26	27	28	29	30

1

2

3

4

May 2022

No.	Sun	Mon	Tue	Wed	Thu	Fri	Sat
18	1	2	3	4	5 <small>Cinco de Mayo</small>	6	7
19	8 <small>Mother's Day</small>	9	10	11	12	13	14
20	15	16	17	18	19	20	21
21	22	23	24	25	26	27	28
22	29	30 <small>Memorial Day</small>	31				

1

2

3

4

June 2022

Monday	Tuesday	Wednesday	Thursday	Friday	Saturday	Sunday
		1	2	3	4	5
6	7	8	9	10	11	12
13	14	15	16	17	18	19
20	21	22	23	24	25	26
27	28	29	30			
						

1

2

3

4

July

2022

Sun	Mon	Tue	Wed	Thu	Fri	Sat
					1	2
3	4 <small>Independence Day</small>	5	6	7	8	9
10	11	12	13	14	15	16
17	18	19	20	21	22	23
24	25	26	27	28	29	30
31						

1

2

3

4

August 2022

wk	Monday	Tuesday	Wednesday	Thursday	Friday	Saturday	Sunday
31	1	2	3	4	5	6	7
32	8	9	10	11	12	13	14
33	15	16	17	18	19	20	21
34	22	23	24	25	26	27	28
35	29	30	31	1	2	3	4

September 2022

Wk	Sun	Mon	Tue	Wed	Thu	Fri	Sat
35					1	2	3
36	4	5 <small>Labor Day</small>	6	7	8	9	10
37	11	12	13	14	15	16	17
38	18	19	20	21	22	23	24
39	25	26	27	28	29	30	




1

2

3

4

October 2022

Monday	Tuesday	Wednesday	Thursday	Friday	Saturday	Sunday
					1	2
3	4	5	6	7	8	9
10	11	12	13	14	15	16
17	18	19	20	21	22	23
24	25	26	27	28	29	30
31						

November

2022

Sun	Mon	Tue	Wed	Thu	Fri	Sat
		1	2	3	4	5
6	7	8	9	10	11 <small>Veterans Day</small>	12
13	14	15	16	17	18	19
20	21	22	23	24 <small>Thanksgiving Day</small>	25	26
27	28	29	30			

December

2022

Sun

Mon

Tue

Wed

Thu

Fri

Sat

1

2

3

4

5

6

7

8

9

10

11

12

13

14

15

16

17

18

19

20

21

22

23

24

25

26

27

28

29

30

31

Christmas Day

Christmas Day (observed)

Months and Days

Months	No. of Days
January	31
February	28 or 29
March	31
April	30
May	31
June	30

1

2

3

4

Months and Days

Months	No. of Days
July	31
August	31
September	30
October	31
November	30
December	31

1

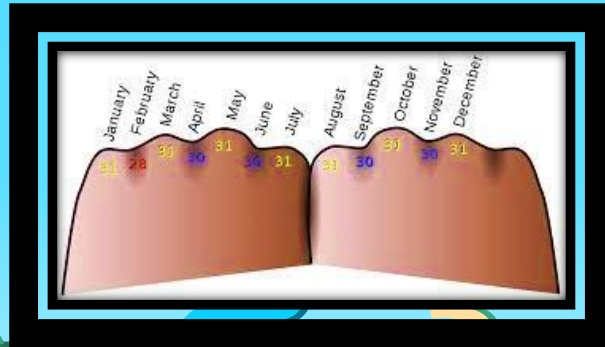
2

3

4

Simple Way of Remembering the Number of Days in each Month

You can also remember the number of days of every month by **clenching your fist** as shown here.



1

4

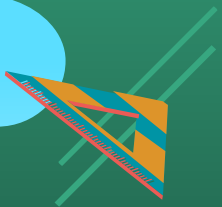
When you clench your fist, you can see that there is one **raised part** of every finger and one **depression** between two fingers.

1

2

3

4



Depression between
two fingers (shows
30 or 29 or 28 days)

Raised part of the
finger (shows
31 days)

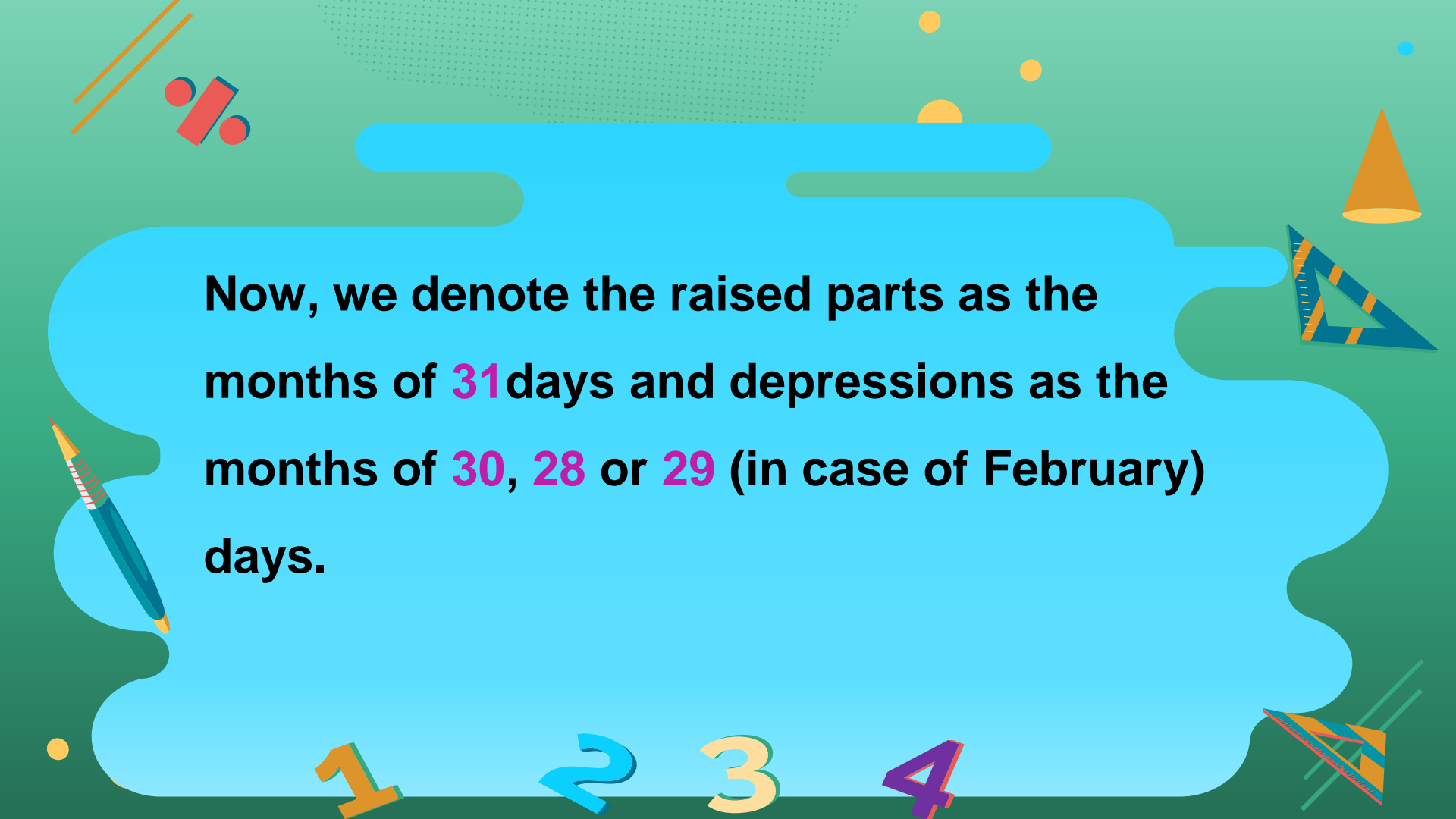


1

2

3

4

The background is a vibrant green with a pattern of small white dots. It features various geometric shapes and school supplies: a red percentage sign, a blue pencil, a yellow cone, a blue set square, and a yellow pencil. The text is centered in a large, light blue, cloud-like shape.

Now, we denote the raised parts as the months of **31** days and depressions as the months of **30**, **28** or **29** (in case of February) days.

1

2

3

4