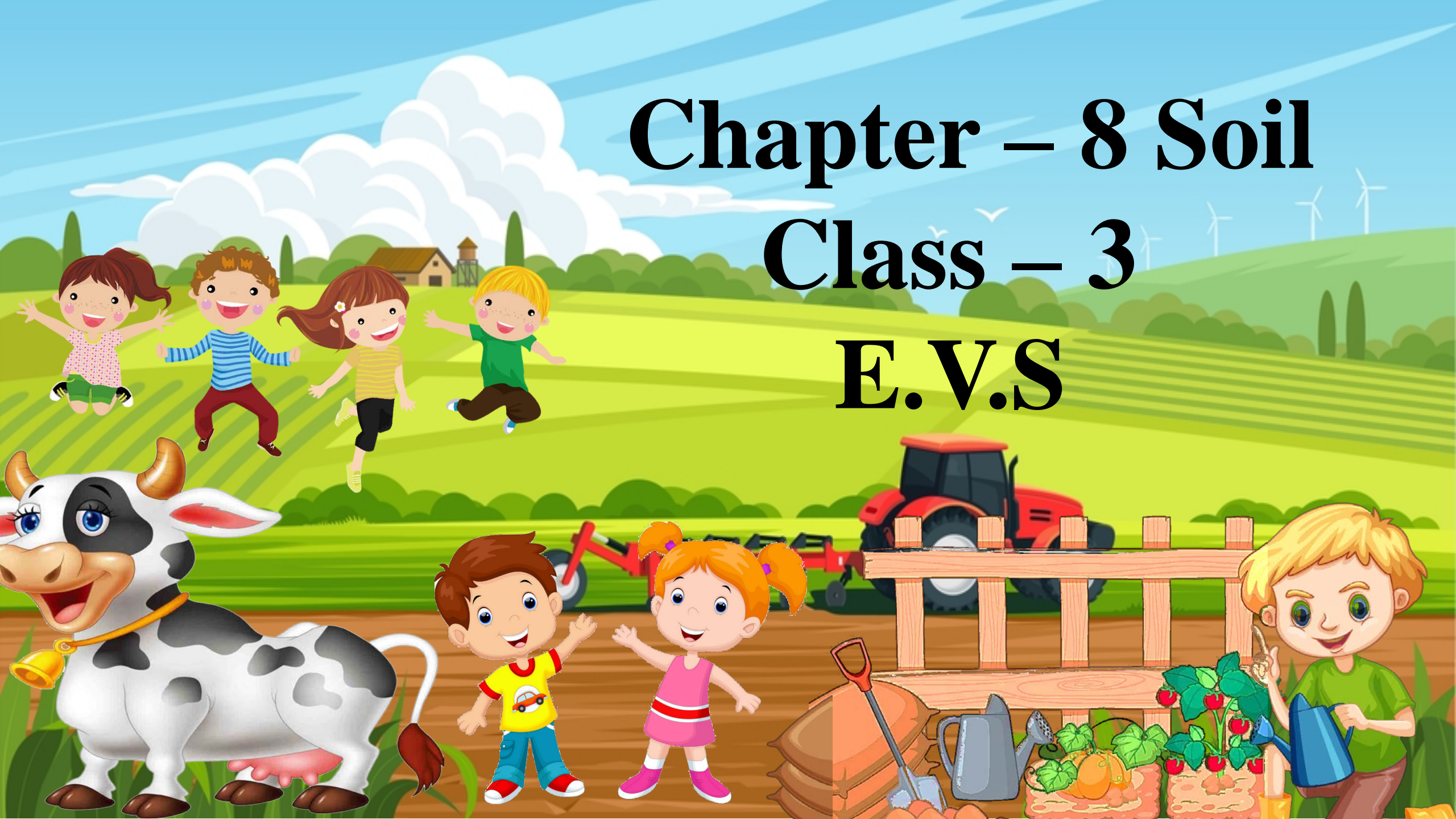


Chapter – 8 Soil

Class – 3

E.V.S





INTRODUCTION

Soil is the uppermost layer of the earth's crust. It is made of small pieces of rocks and dead plants. It is the home of many small creatures. It is very important for the plants. The plants get water and minerals from it.



FORMATION OF SOIL

In the beginning, the earth was covered with thick layer of rocks. For thousands of years, these rocks were heated by the sun and cooled by the rain and air. Due to the force of wind, water and changes in weather, the rocks kept breaking into small pieces. When these rocks broke into very small pieces, they formed soil.



COMPOSITION OF SOIL

Soil is made of small and big stones, sand, clay and humus.



Gravel

It is made of pieces of rocks. It does not hold water.



INTERESTING FACTS

- ❖ The earth is five billion years old although life has existed 150 million years ago.



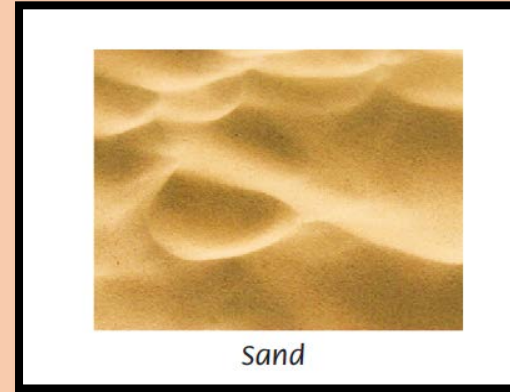
Gravel





Sand

Sand is small pieces of rocks. It is fine than gravel. It is light brown or grey in colour. It also does not hold water.



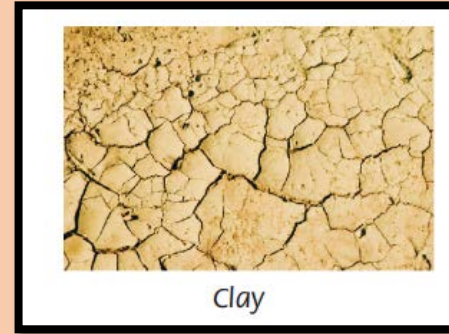
Sand





Clay

Clay is made of tiny particles. They are tightly packed. The clay is smooth and soft. It is used for making pots and toys.



Clay

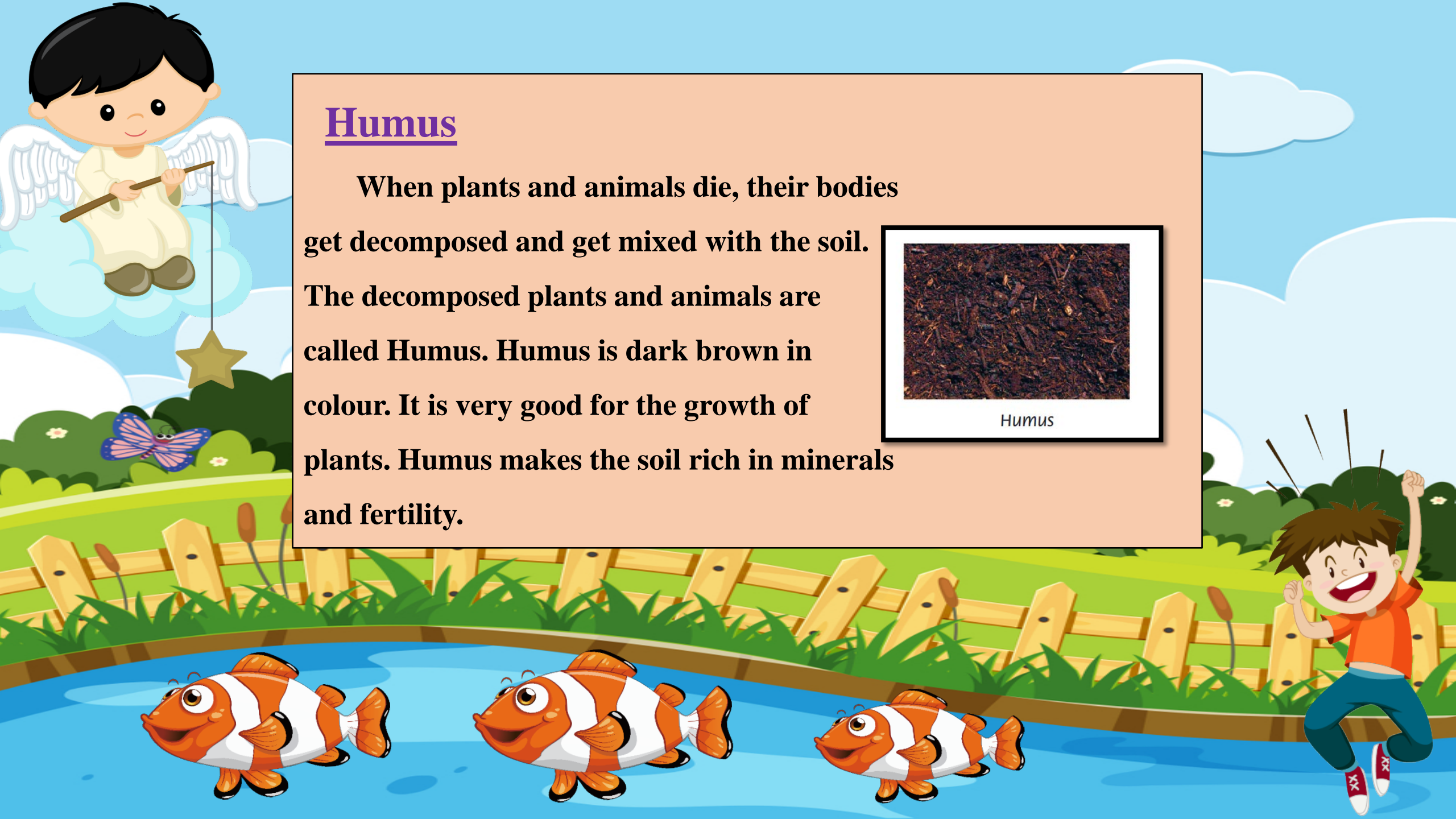


Humus

When plants and animals die, their bodies get decomposed and get mixed with the soil. The decomposed plants and animals are called Humus. Humus is dark brown in colour. It is very good for the growth of plants. Humus makes the soil rich in minerals and fertility.



Humus





Take some soil in a glass jar. Fill the jar with water. Cover it with a lid. Shake the jar well. Now leave the jar undisturbed for half an hour and let the soil and water settle. What do you observe?





Stones settle at the bottom. Sand granules are seen above the stones. Clay forms the top layer. The colour of the water is not very clear. Dark brown pieces of humus are seen floating on the top of the water.





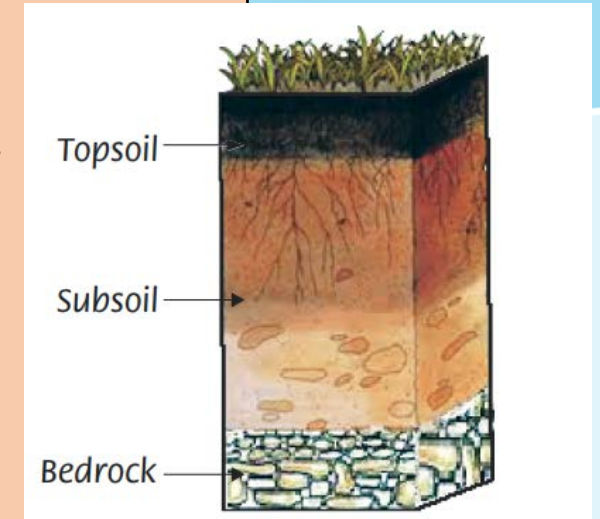
SOIL PROFILE

Soil is formed of many layers. When we dig the earth, we find that each layer of the soil is different. This sequence of layers of soil is called the soil profile.





- **Topsoil** : This is the top most layer of the soil. It is dark in colour and also contains the humus.
- **Subsoil** : It lies below the topsoil. It is the light coloured layer. It is full of broken pieces of rocks.
- **Bedrock** : This is the bottom layer of the soil. It is made of big pieces of rocks.

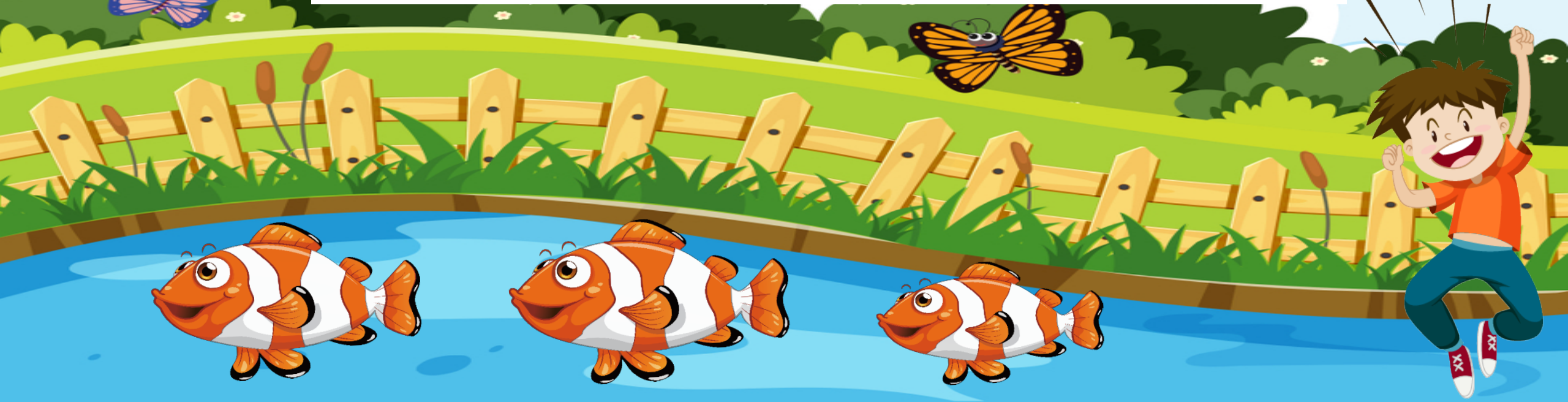




Check Your Knowledge

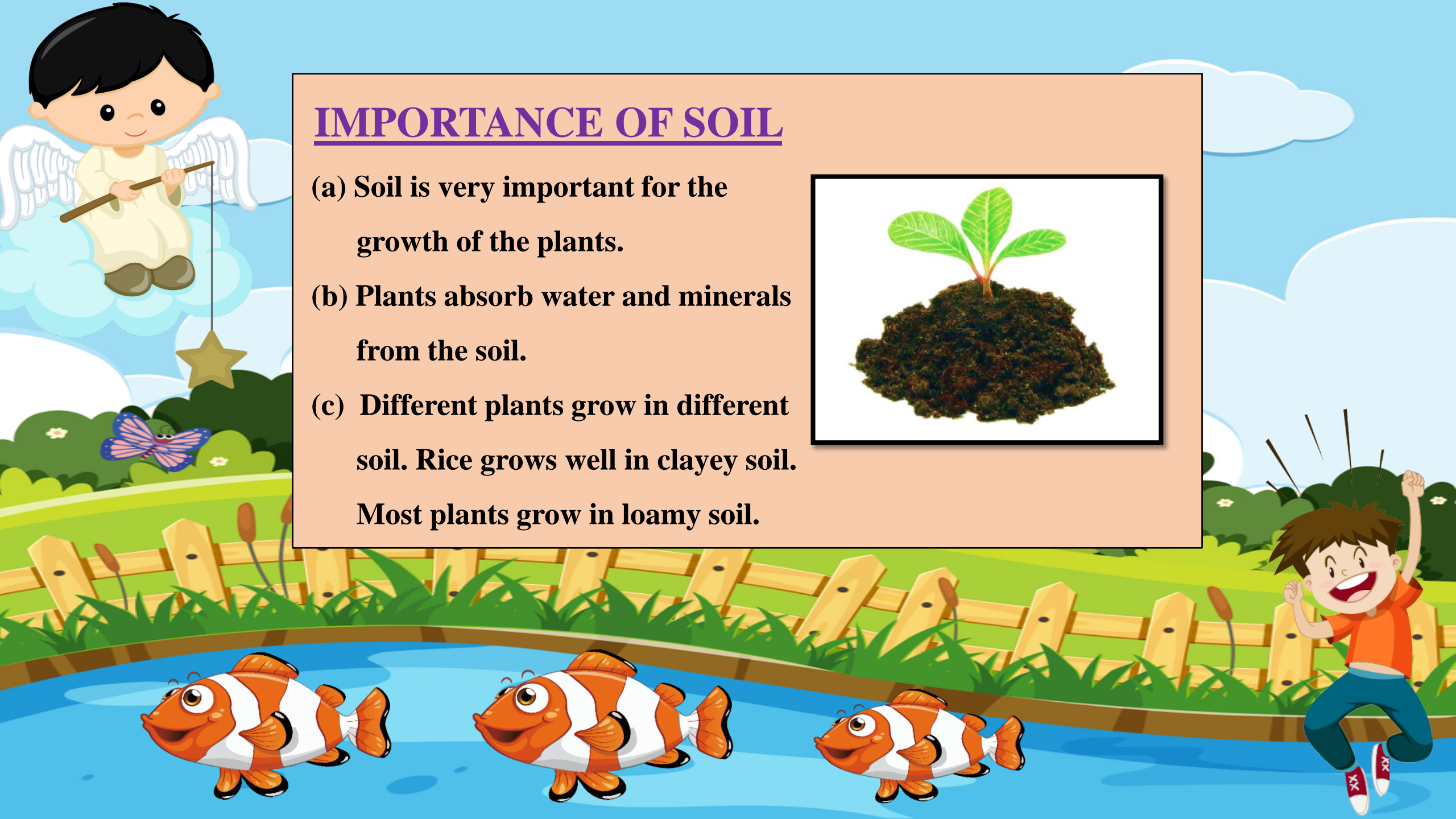
Fill in the blanks.

1. Plants get _____ and minerals from the soil.
2. Humus is _____ in colour.
3. _____ and _____ does not hold water.



IMPORTANCE OF SOIL

- (a) Soil is very important for the growth of the plants.
- (b) Plants absorb water and minerals from the soil.
- (c) Different plants grow in different soil. Rice grows well in clayey soil. Most plants grow in loamy soil.





(d) Some creatures like earthworm, rabbits, ants live in the soil.

Rabbits make burrows in the soil.

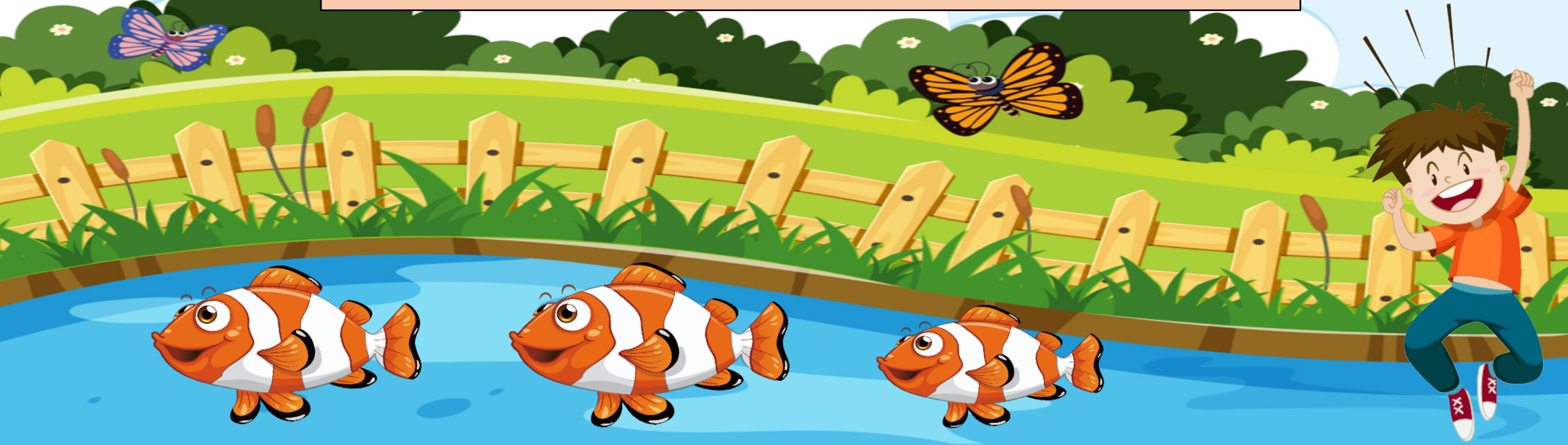
(e) Clay is used to make bricks. Sand is mixed with cement to make buildings.





Fact File

- Different kinds of soil is found at different places.
- Clayey soil is smooth and soft and is used to make pots and toys.
- Loamy soil is the best soil for plants, as it contain more humus.





Things to Remember

- Soil is the uppermost layer of the earth.
- Soil is formed by the breakdown of the rocks.
- Soil contains stones, sand, clay and humus.
- Humus is the decomposed parts of dead plants and animals.
- Humus is good for the growth of plants.



