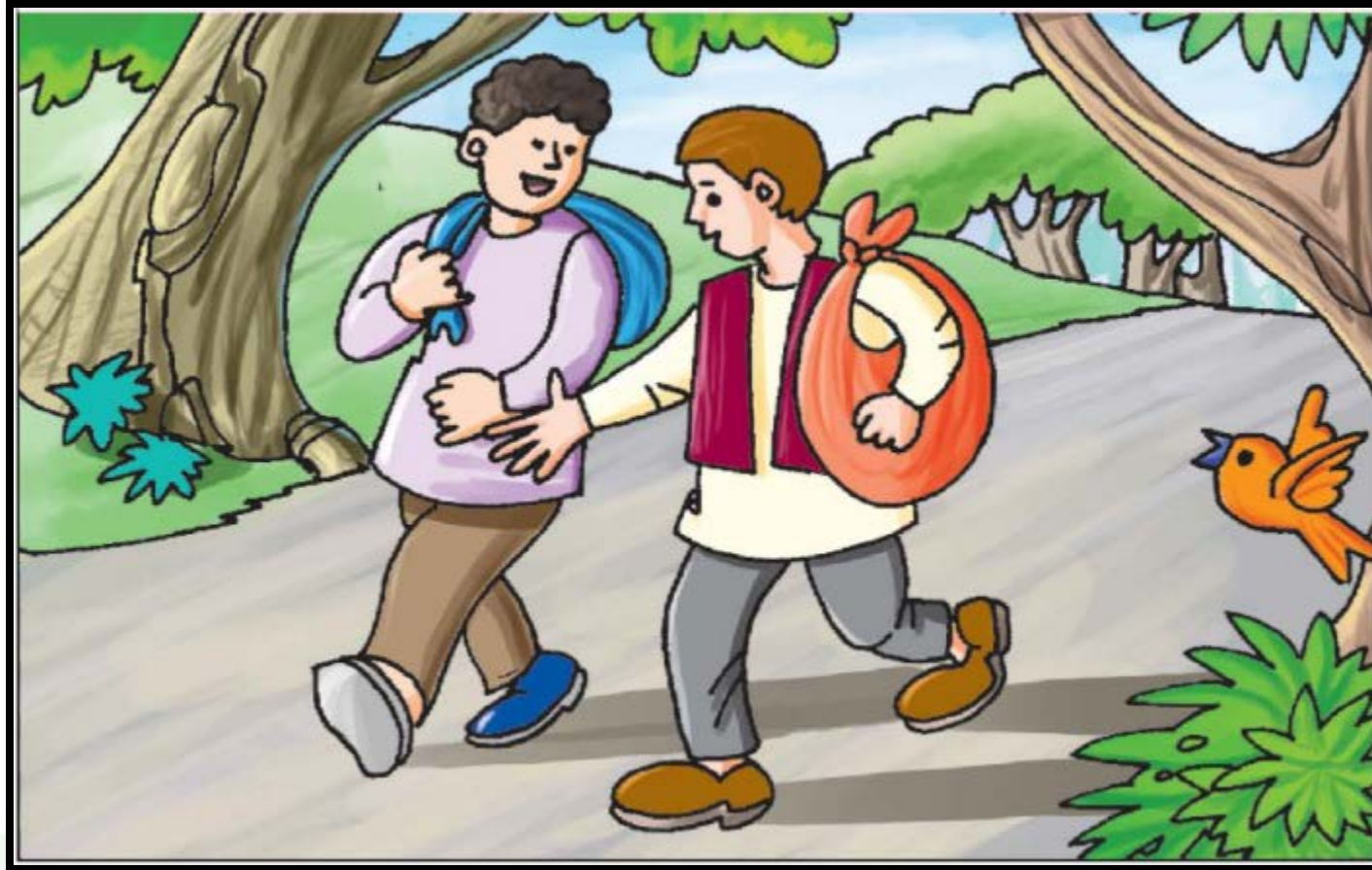




2. Be a True Friend

Class 2 English

Mani and Ben were very good friends. Once they were passing through a forest.



All of a sudden a bear appeared.




Ben quickly climbed a tree. Mani got an idea, he lay down motionless. He did not breathe.




The bear sniffed Mani and went away.





Mani, thank God we are saved.

I was almost dead.
Ben, why didn't you
help me to climb
the tree.



Mani, sorry
dear,
I only thought
about myself.
But what did the
bear tell you? It
was, so near to
your ear.

The bear told me to
be careful of friends
who are not true?





Thank you

6 ft

6 ft

6 ft