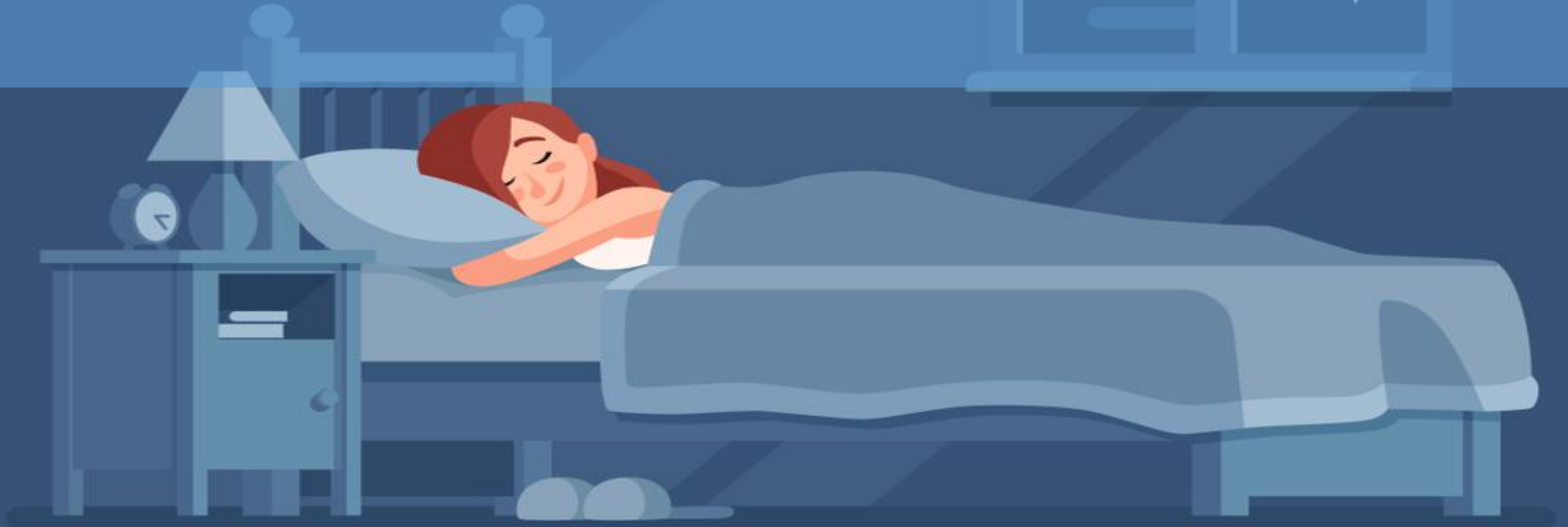


**A Slumber did my spirit seal**



# About The Poet

**"A slumber did my spirit seal" is a poem written by William Wordsworth in 1798 and published in the 1800 edition of Lyrical Ballads. It is usually included as one of his The Lucy poems, although it is the only poem of the series not to mention her name.**

# **A Slumber did my spirit seal Introduction**

**This is one of the 'Lucy poems' written by William Wordsworth. These poems have been dedicated to his beloved. The poet refers to death which is a permanent sleep. The poet did not realize when his beloved Lucy slept forever i.e. she died. She had taken life for granted and realized this harsh truth of life after her death.**

# Poem and Explanation

**A slumber did my spirit seal—**

**I had no human fears.**

**She seemed a thing that could not feel**

**The touch of earthly years.**

# Poem and Explanation

**Slumber:** sleep

**Spirit:** soul

The poet's soul had drifted into deep sleep as he did not have any realization of the truth. He had taken life for granted and had never thought that one day death would take Lucy away from him. When she was taken away, he could not bear the loss.

# Poem and Explanation

**No motion has she now, no force—**

**She neither hears nor sees,**

**Rolled round in earth's diurnal course**

**With rocks and stones and trees.**

# Poem and Explanation

**diurnal: daily**

**(Earth's diurnal course" is earth's daily rotation on its axis)**

**The poet accepts the truth that Lucy is no more. She is motionless, lifeless. She cannot see nor hear. She has been buried in the earth. She will assimilate into the earth and is rotating along with the earth. One day she will become one with the rocks, stones and trees that are a part of the Earth.**

# **A Slumber did my spirit seal Summary**

**The poet admits that he was in a sort of a deep sleep because he did not fear the harsh reality of life. He had taken life for granted and had never thought that one day death could separate him from his beloved Lucy. For him she was like an immortal goddess who was unaffected by age and mortality.**

**As she is dead, she lies motionless. She cannot hear or see. She has been buried in the earth and rotates along with the Earth. One day she will get assimilated with the trees, rocks and stones that are a part of the earth.**



Thank  
you!