

EMBEDDED FIGURES

What is the Embedded Figures Test?

- Embedded figures tests are the tests where figures are embedded inside another figure. In the embedded figure questions, a unique figure is embedded or hidden inside any of the four options provided in the answer.
- All the options for these questions look confusing and the same. Hence, candidates likely make mistakes easily, or take lots of time to identify the correct answer to embedded figure questions.
- But, with the knowledge of proper reasoning tricks and time management, candidates can master reasoning questions with embedded or hidden figures.

Types of embedded figures tests

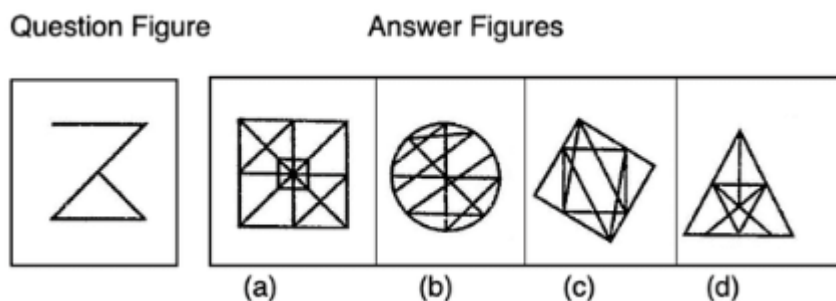
There are various types of embedded figure tests.

Type1: Question Figure is embedded in the answer figure

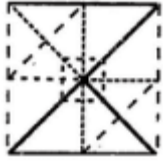
In these embedded figure tests, a question figure is given along with four answer figures. The question figure is embedded or hidden in one of the given answer figures. The candidate has to find out the correct answer figure.

- In some embedded figure test questions, the embedding of the question figure is not done directly in the answer figures. While answering these questions, the candidate must change the orientation of the question figure to get the correct answer.

Example 1: Find out the answer figure in which the given question figures is embedded.



The answer is (a) the question figure is embedded in the answer figure (a)

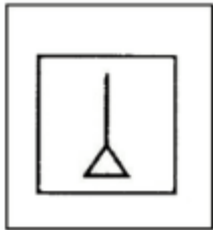


This is an example where the question figure is embedded in the answer figure, but its orientation is changed.

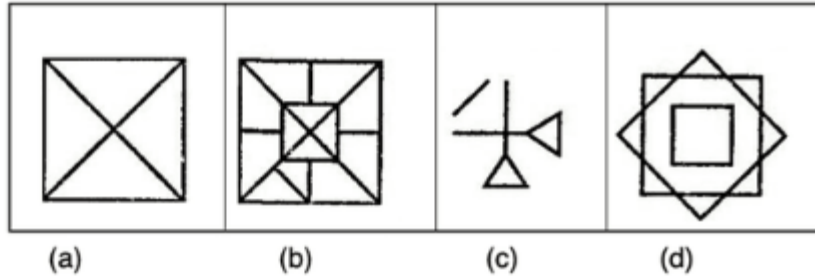
- In some embedded figures tests, the question figure is hidden in two or more answers. In such questions, the candidates have to select the answer in which the question figure is hidden with the least change in the orientation.

Example 2: Choose the correct answer figure in which the question figure is embedded.

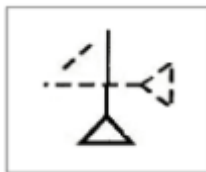
Question Figure



Answer Figures



The answer is: (c) The question figure is embedded in the answer figure (c)

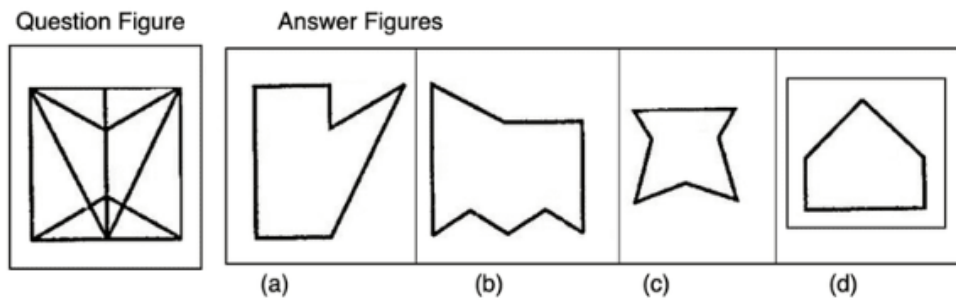


While selecting the answer, the vertical image of the question figure is considered not the horizontal image.

Type 2: Answer figure is embedded or hidden in the question figure

In such questions, one question figure and four answer figures are given. The candidate has to find out that answer figure, embedded in the question figure.

Example 3: Select the correct answer figure that is embedded in the question figure.

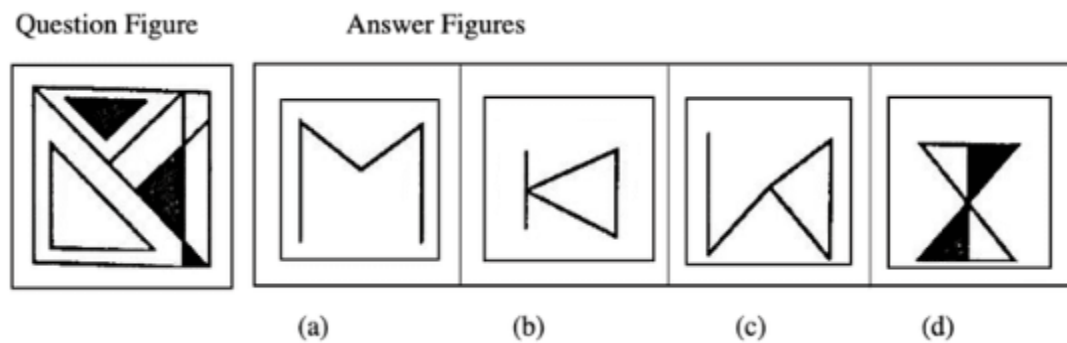


The answer is (a)



The answer figure (a) is hidden in the question figure.

Example 4: Select the correct answer figure that is embedded in the question figure.



The answer is (a) the figure in option (a) is embedded in the question figure.

