

What Are Living and Non-living Things?

A. Fill in the Blanks

Word Bank: antennae six exoskeleton thorax abdomen

1. The three main body parts of an insect are the head, _____, and abdomen.
2. An insect has a pair of _____ on its head to help it feel and smell.
3. An insect has _____ legs, which are attached to its thorax.
4. The hard outer covering that protects an insect is called an _____.
5. The _____ is the last body section of an insect.

B. Match the Following;

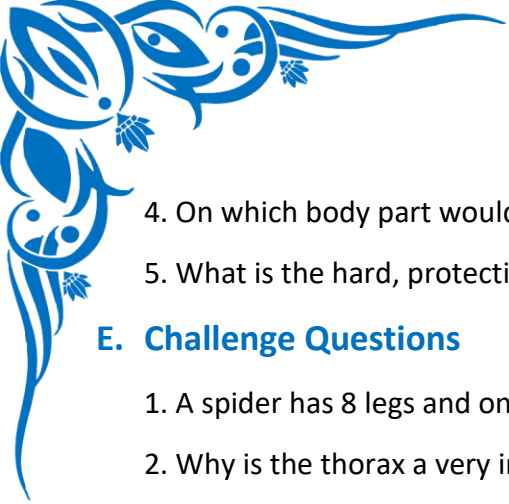
Column A (Body Part)	Column B (Description)
1. Head	A. The middle section; where legs and wings attach.
2. Thorax	B. Hard outer shell for protection.
3. Abdomen	C. A key feature of all insects; used for walking.
4. Antennae	D. The front section; has eyes, mouth, and antennae.
5. Exoskeleton	E. "Feelers" for sensing the world.
6. Six Legs	F. The rear section; holds the stomach.

C. Practice Problems

1. How many pairs of legs does an insect have?
2. Do all insects have wings? (Yes / No)
3. Which part of the body holds important organs like the stomach and heart?
4. If you see a creature with 6 legs, is it likely an insect? (Yes / No)
5. What part of the insect helps it sense the world around it?

D. Warm-up Questions

1. How many main body parts does an insect have?
2. What are the names of the three main body parts?
3. How many legs do all insects have?



4. On which body part would you find an insect's antennae?
5. What is the hard, protective outer covering of an insect called?

E. Challenge Questions

1. A spider has 8 legs and only 2 main body parts. Is a spider an insect? Explain why or why not.
2. Why is the thorax a very important part for an insect that needs to move around quickly?
3. An insect's skeleton is on the outside of its body. What is one good thing (advantage) about having an exoskeleton?
4. If you see a creature with a head, thorax, abdomen, and 6 legs, but it has no wings, could it still be an insect? Give an example of one.
5. Why do you think an insect's antennae are on its head instead of its abdomen?

F. Word Problems & Application

1. Maria is watching a ladybug crawl on a flower. She wants to make sure it's an insect, so she counts its legs. How many legs should she count?
2. A scientist is studying a bee. He is looking at the part of the body where the wings connect. What is this middle section called?
3. A grasshopper is hiding in the grass. It uses its long "feelers" on its head to sense if you are getting too close. What is the scientific name for these "feelers"?
4. A butterfly has three body sections. The very last section is long and helps it digest the flower nectar it drinks. What is this rear section called?
5. You find two bugs in your backyard. One has 6 legs and wings. The other has 12 legs and no wings. Which one is the insect?

G. True or False

1. All insects can fly. _____
2. An insect's legs are attached to its abdomen. _____
3. An insect has 8 legs. _____
4. The head is the middle part of an insect's body. _____
5. An insect's eyes and antennae are on its head. _____