

MULTIPLICATION Exercise



[illegible]



2. Complete the following :

(i) 6 times 16 = 6 times 10 + 6 time _____

(ii) 7 times 14 = 70 + 7 times _____

(iii) 3 times 12 = 30 + _____



1 2 3 4



2. Complete the following :

(iv) 5 times 15 = 50 + _____

(v) 8 times 18 = 80 + _____

1

2

3

4



3. Find the answers :

(i) 9 times 15 =

(ii) 7 times 17 =

(iii) 4 times 18 =

(iv) 3 times 19 =

1 2 3 4



3. Find the answers :

(V) 2 times 11 =

(vi) 5 times 14 =

(vii) 8 times 13 =



3. Find the answers :

(Viii) 6 times 16 =

(ix) 5 times 12 =

(x) 7 times 19 =



1 2 3 4



4. Fill in the blanks :

(a) 5 times 12 =

(b) times 11 = 88

(c) times 9 = 162

(d) 7 times 19 =

4. Fill in the blanks :

(e) times 6 = 84

(f) 5 times = 100

(g) 9 times = 135

(h) 4 times = 52

4. Fill in the blanks :

(i) times 3 = 57

(j) times 16 = 144

(k) times = 177

(l) times = 144



5. Fill in the box to make correct statement :

(a) $11 \times 8 =$

(b) $9 \times 9 =$

(c) $12 \times 8 =$

(d) $14 \times 7 =$

(e) $20 \times 6 =$

(f) $15 \times 6 =$

(g) $16 \times 8 =$

(h) $17 \times 4 =$



5. Fill in the box to make correct statement :

(i) $18 \times 3 =$

(m) $14 \times 3 =$



6. Match the following :

(a) 2165×4

(b) 735×7

(c) 1382×3

(d) 1489×2

(e) 1352×5

(f) 1471×6

(i) 4146

(ii) 8660

(iii) 8826

(iv) 6760

(v) 5145

(vi) 2978



7. Multiply :

(a) 134×4

(b) 104×5

(c) 206×7

(d) 316×5

(e) 424×5

(f) 516×3



7. Multiply :

(g) 526×7

(h) 1518×3

(i) 616×5

(j) 628×8



8.Fill the following boxes using multiplication properties :

1. $43 \times \quad = 56 \times 43$

2. $406 \times 20 = \quad \times 20$

3. $39 \times 40 = \quad \times 39$

4. $725 \times 10 = 10 \times \quad$

5. $36 \times 17 = 17 \times \quad$



1 2 3 4



8. Fill the following boxes using multiplication properties :

6. $21 \times 24 = 24 \times$

7. $16 \times = 28 \times$

8. $25 \times = 28 \times$

9. $4 \times 5 \times 8 = 8 \times \quad \times 4$

10. $10 \times 20 \times 4 = 4 \times 20 \times$





1 2 3 4



9. Find the product :

1. 8×10

2. 29×90

3. 17×50

4. 12×90



10. Find the product :

1. 1.6×200

2. 12×400

3. 5×600

4. 18×100

5. 24×200



10. Find the product :

6. 28×300

7. 27×300

8. 5×600

9. 14×400

10. 7×700



11. Multiply :

1. 52×41

2. 41×48

3. 14×71

4. 75×25

5. 43×54



11. Multiply :

6. 71×24

7. 29×44

8. 22×45

9. 39×41

10. 19×47

1

2

3

4

12. Multiple Choice Questions (MCQ)

Choose the correct option.

?

A man had put his money in 25 purses. Each purse contained ₹ 250. The total amount of money of the man is

A

₹ 6520

B

₹ 6250

C

₹ 6205

1

2

3

4



There are 24 sections in a school. If each section has 48 students, the total number of students in the school is

A

1152 students

B

1125 students

C

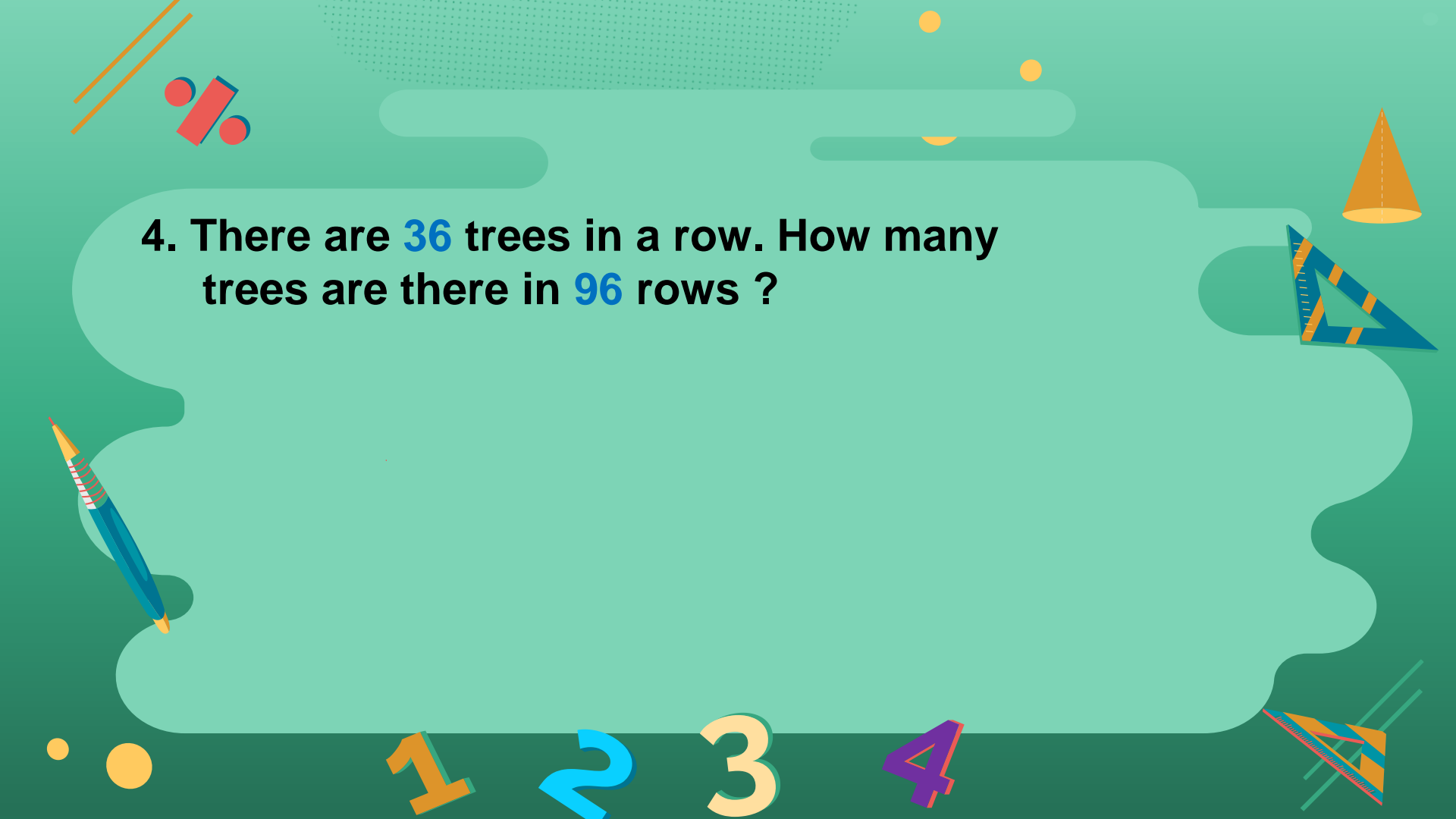
1512 students

2. There are 62 beads in a chain. How many beads will be required to prepare 28 such chains ?

1 2 3 4

3. The price of an article is ₹ 232. Find the price of such 42 articles.

1 2 3 4



4. There are 36 trees in a row. How many trees are there in 96 rows ?

1 2 3 4

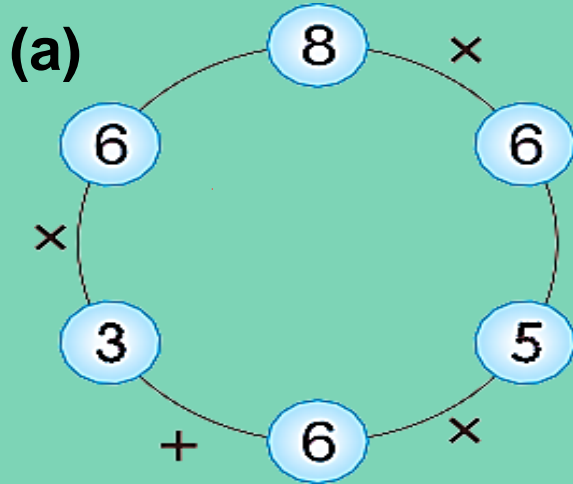


5. A sofa-set costs ₹ 3225.
Find the cost of such 3 sofa-sets.

6. If the cost of one table is ₹ 1160, find the cost of such 8 tables.

1 2 3 4

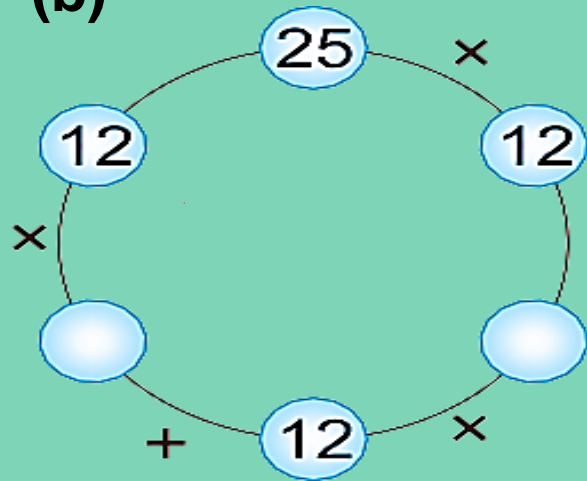
13. Solve the puzzle by filling the placeholders :



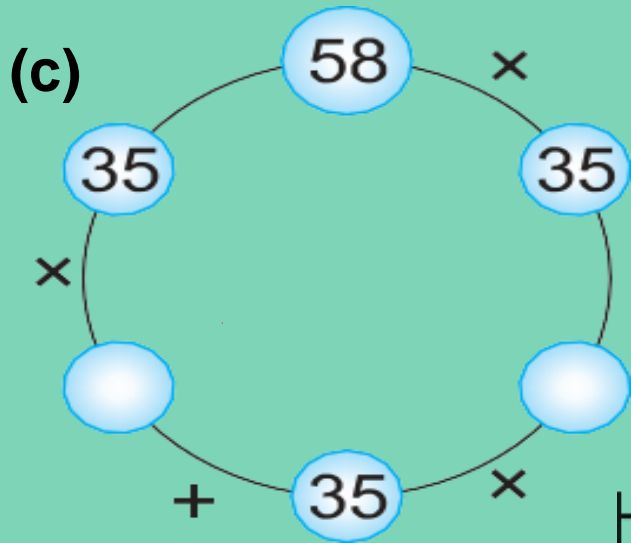
Hence, $8 \times 6 = 5 \times 6 + 3 \times 6$

1 2 3 4

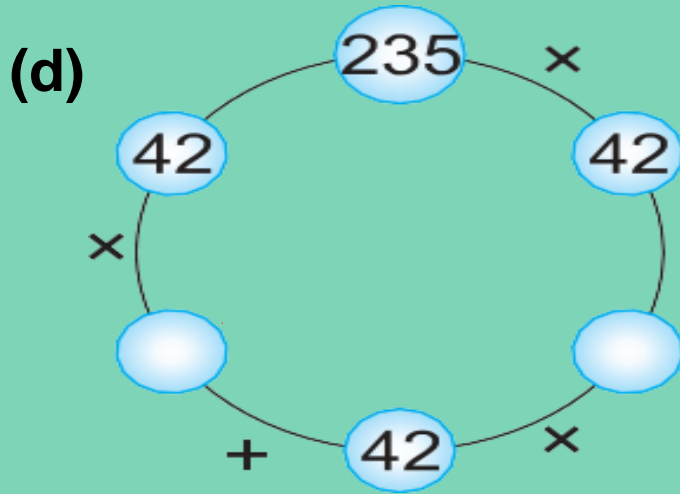
(b)



Hence, $(25 \times 12) = \text{ } \times 12 + \text{ } \times 12$



Hence, $58 \times 35 = \text{ } \times 35 + \text{ } \times 35$



Hence, $235 \times 42 = \text{ } \times 42 + \text{ } \times 42$

14. Fill in the blanks :

$$\begin{aligned} \text{(a) } 568 \times 15 &= 500 + 60 + 8 \times 15 \\ &= 500 \times 15 + 60 \times 15 + 8 \times 15 \\ &= 7500 + 900 + 120 = 8520 \end{aligned}$$

$$\begin{aligned} \text{(b) } 358 \times 16 &= \quad + \quad + 8 \quad \times 16 = \quad \times 16 \\ &+ \quad \times 16 \\ &= \quad + \quad + \quad = 5728 \end{aligned}$$

15. Fill in the blanks :

(c) $442 \times 19 = \boxed{+ 40} \times \boxed{19}$

$= \boxed{} \times 19 + \boxed{} \times 19 + \boxed{} \times 19$

$= \boxed{} + \boxed{} + \boxed{} = \boxed{}$


(d) $392 \times 18 = \boxed{300 + + } \times \boxed{18} = \boxed{} \times 18$

$+ \boxed{} \times 18$

$= \boxed{} + \boxed{} + \boxed{} = \boxed{}$



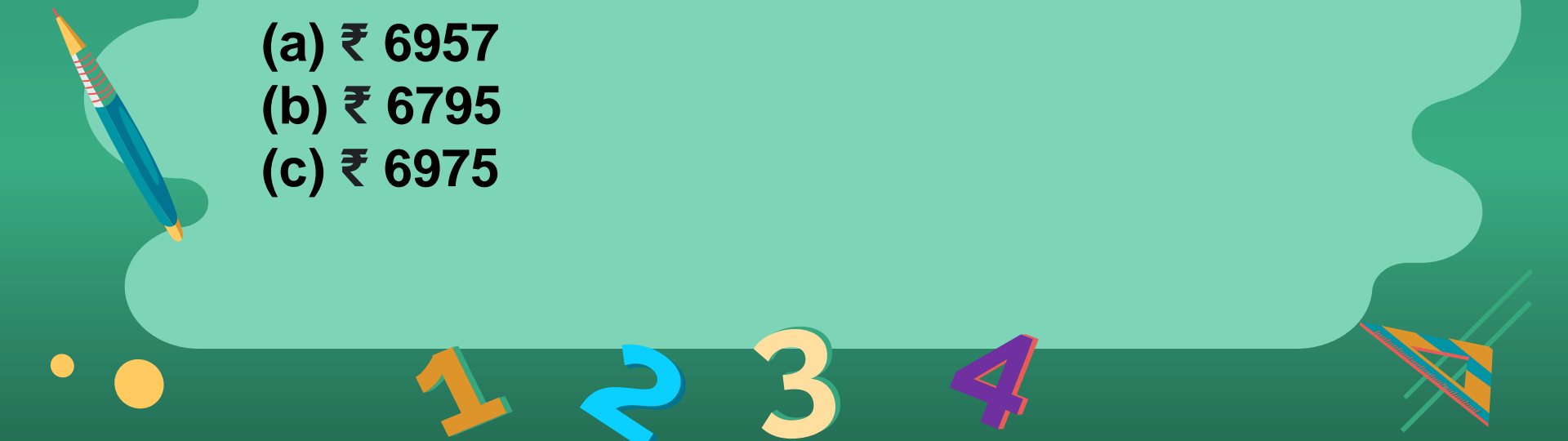
16.Math Quiz

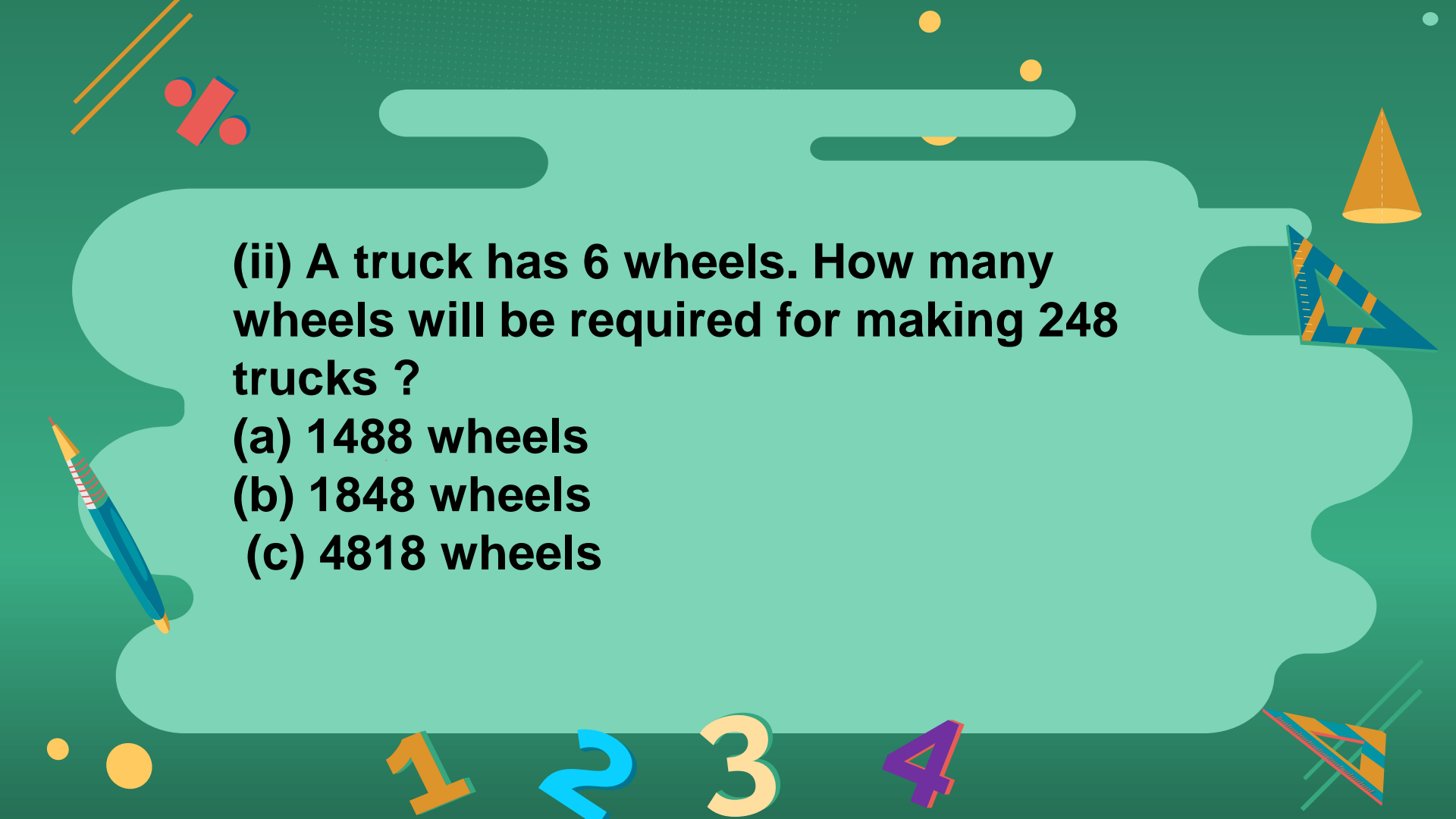
1. Is it correct, $156 \times (235 \times 50) = (156 \times 235) \times 50$?
 2. Is 75×40 the same as 100×30 ?
 3. Is $65 \times 30 = 195 \times 100$?
- 



17. Choose the correct option. (MCQs)

(i) If one bedsheet costs ₹ 225, the cost of 31 such bedsheets is

- (a) ₹ 6957**
 - (b) ₹ 6795**
 - (c) ₹ 6975**
- 



(ii) A truck has 6 wheels. How many wheels will be required for making 248 trucks ?

- (a) 1488 wheels**
- (b) 1848 wheels**
- (c) 4818 wheels**

1 2 3 4



**18. Fill in the box to make correct statement
:**

(i) $15 \times 4 =$

(ii) $16 \times 4 =$

(iii) $17 \times 8 =$

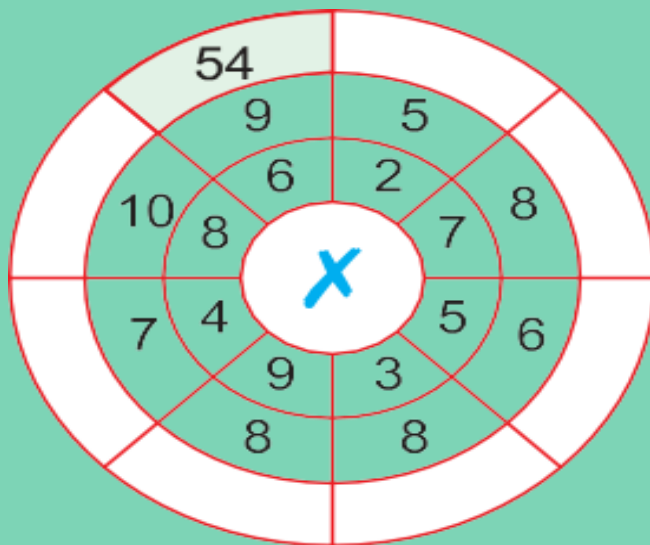
(iv) $18 \times 5 =$

(v) $13 \times 4 =$

19. Complete the multiplication chart as under

:

(a)

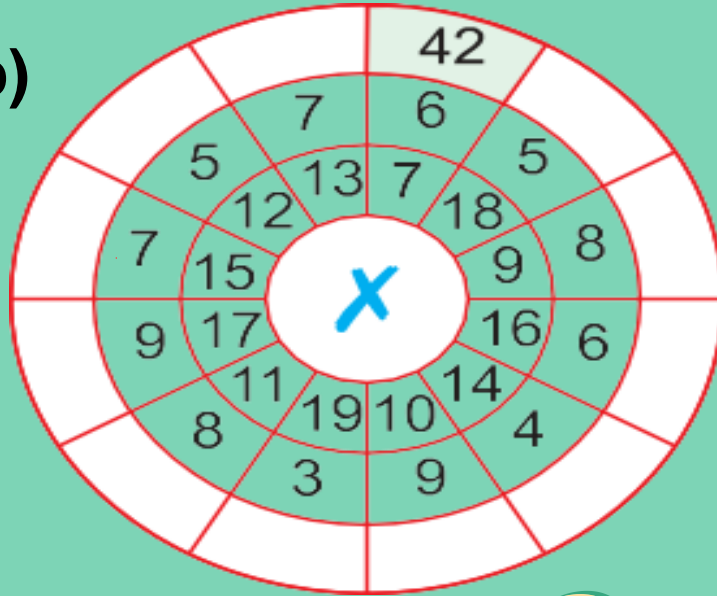


1 2 3 4

19. Complete the multiplication chart as under

:

(b)



1 2 3 4



20. Multiply :

(i) 1234×4

(ii) 238×6

(iii) 2448×2

(iv) 1326×5

(v) 1628×4



21. Fill the following boxes using multiplication properties :

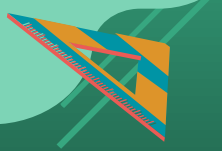
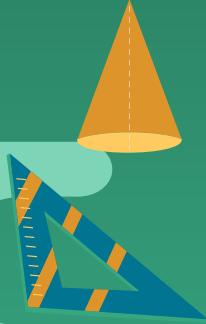
(i) $16 \times 14 \times 2 = 2 \times 14 \times$

(ii) $214 \times 25 = 25 \times$

(iii) $243 \times 1 =$

(iv) $255 \times 1 =$

(v) $180 \times$ $= 180$





22. Find the product:

(i) 9×800

(ii) 10×100

(iii) 18×500

(iv) 19×300

(v) $9 \times 20 \times 30$

(v) $9 \times 20 \times 30$

1

2

3

4



23. Multiply :

(i) 68×48

(ii) 69×27

(iii) 72×35

(iv) 147×24

(v) 269×17

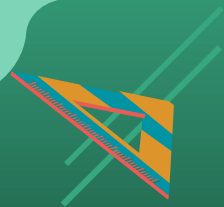


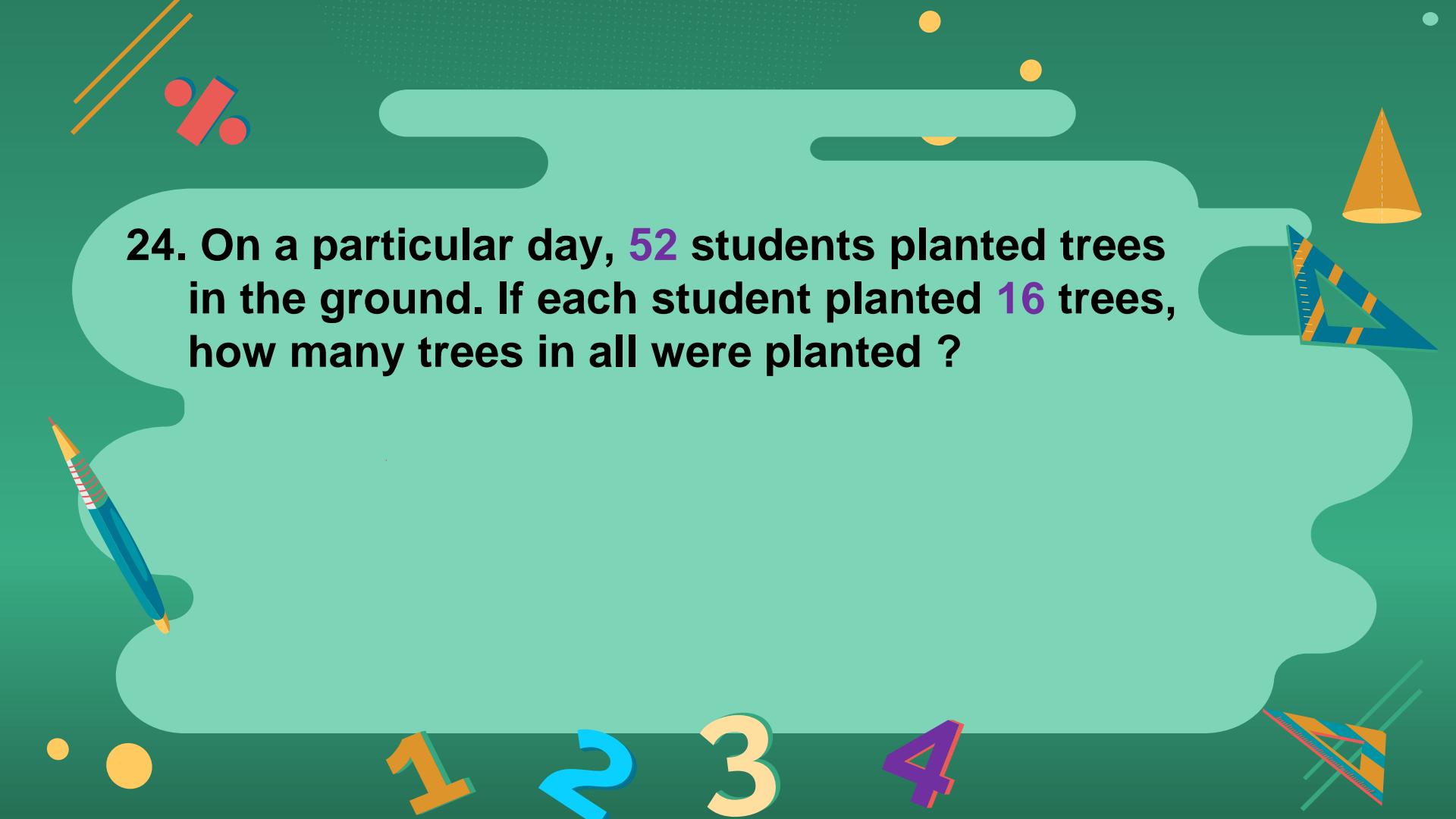
1

2

3

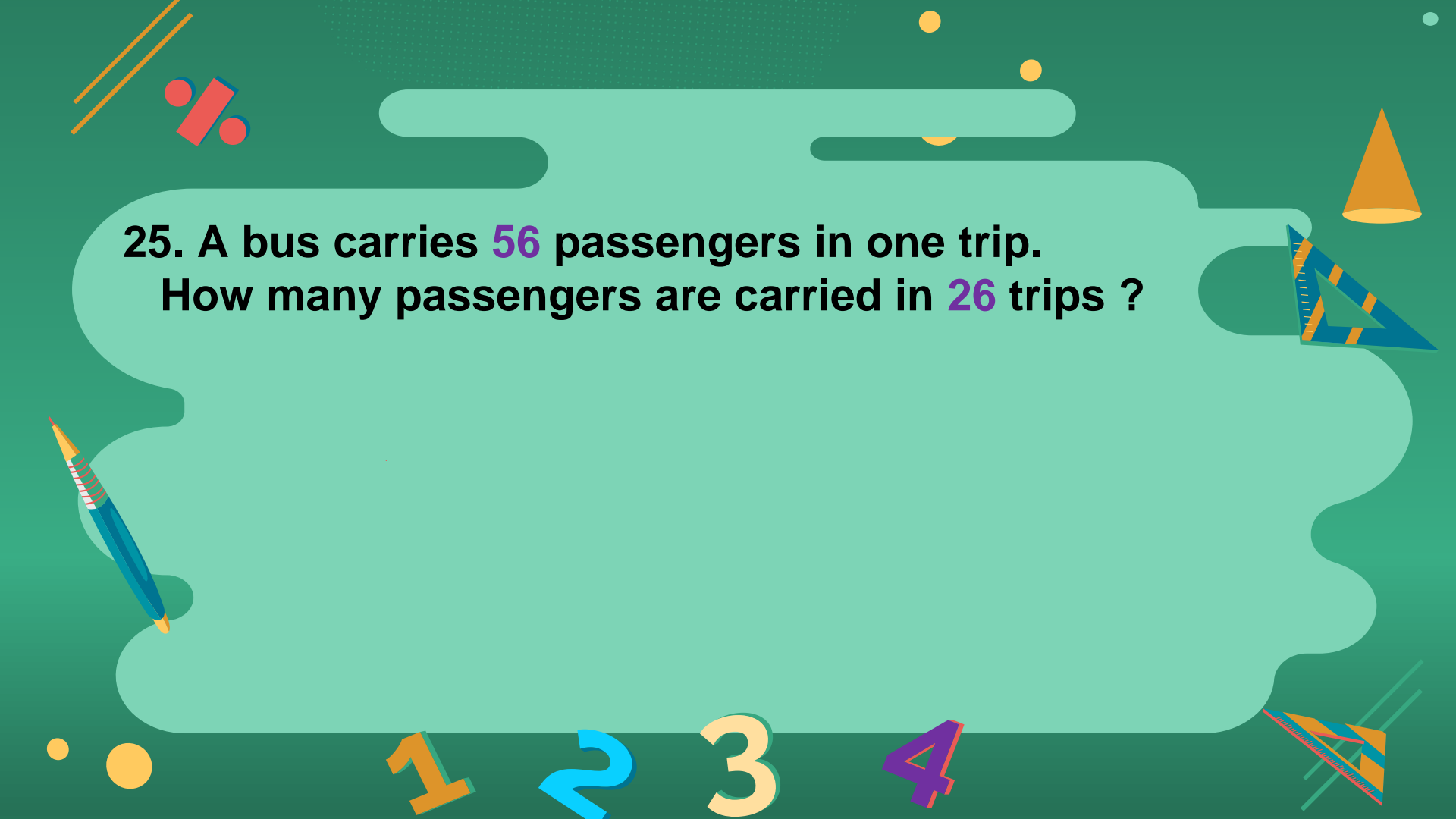
4



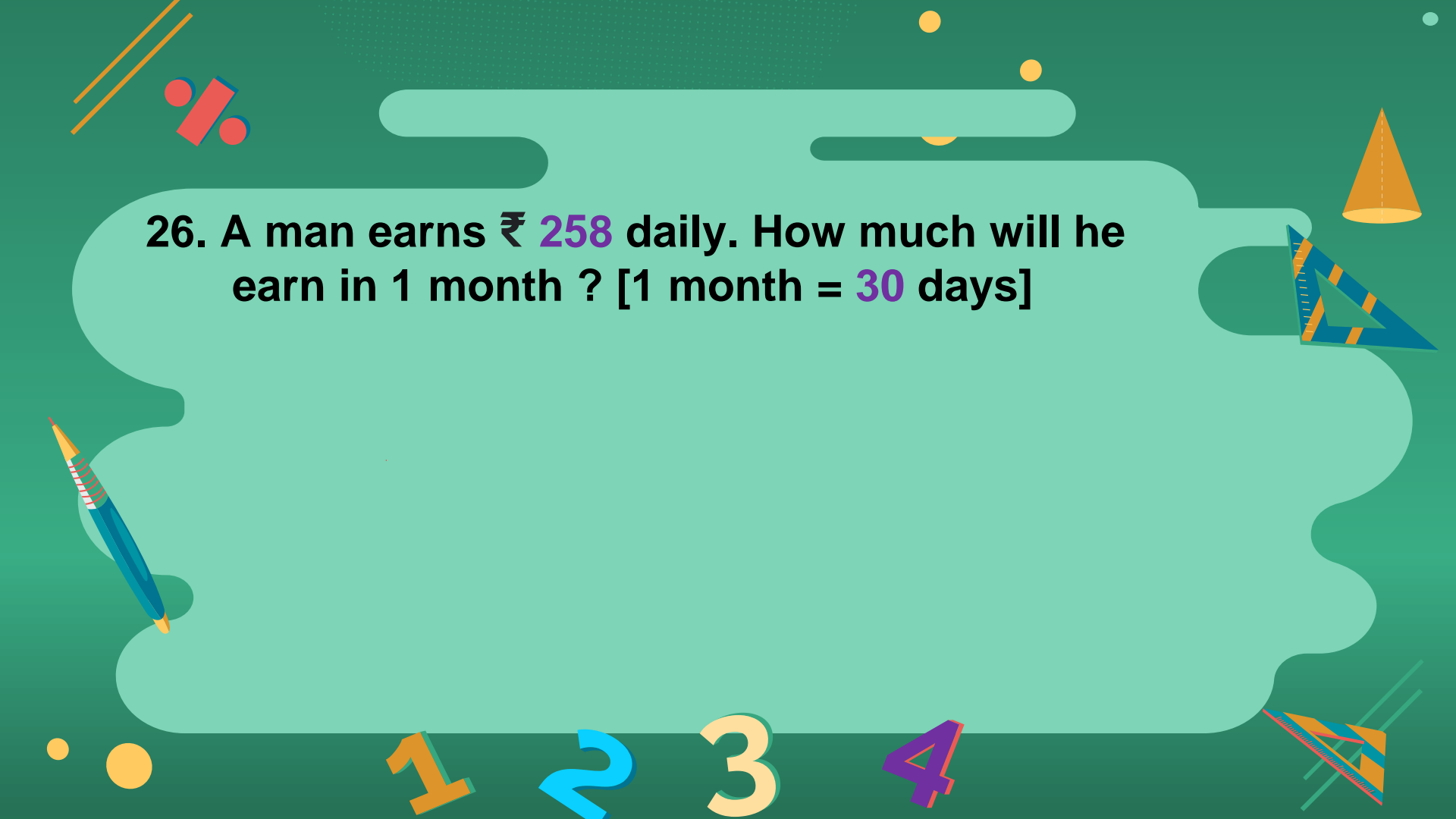


24. On a particular day, 52 students planted trees in the ground. If each student planted 16 trees, how many trees in all were planted ?

1 2 3 4



25. A bus carries **56** passengers in one trip.
How many passengers are carried in **26** trips ?



26. A man earns ₹ 258 daily. How much will he earn in 1 month ? [1 month = 30 days]