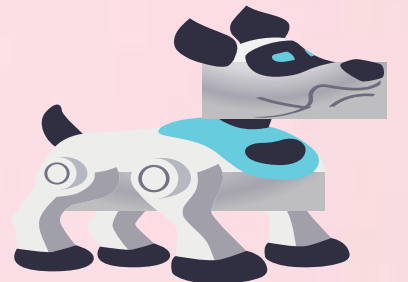
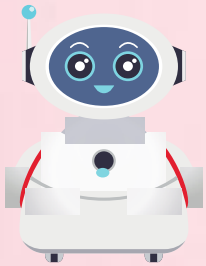


# Measures Of Capacity

## Exercise





**Add :**

$$\begin{array}{r} 4 \quad 5 \quad 0 \quad \text{l.} \\ + \quad 2 \quad 9 \quad 0 \quad \text{l.} \\ \hline \end{array}$$

$$\begin{array}{r} 5 \quad 4 \quad 0 \quad \text{ml.} \\ + \quad 3 \quad 8 \quad 0 \quad \text{ml.} \\ \hline \end{array}$$

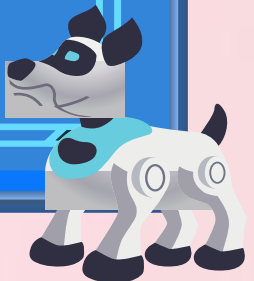




EXAMPLES :

$$\begin{array}{r} 9 \quad 8 \quad 0 \quad \text{l.} \\ + \quad 3 \quad 4 \quad 0 \quad \text{l.} \\ \hline \end{array}$$

$$\begin{array}{r} 6 \quad 3 \quad 5 \quad \text{ml.} \\ + \quad 3 \quad 1 \quad 5 \quad \text{ml.} \\ \hline \end{array}$$

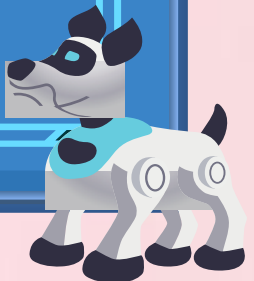




**Subtract :**

$$\begin{array}{r} 3851. \\ - 2901. \\ \hline \end{array}$$

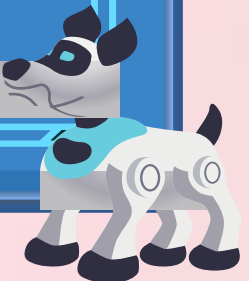
$$\begin{array}{r} 1981. \\ - 1691. \\ \hline \end{array}$$





$$\begin{array}{r} 690 \text{ ml.} \\ - 485 \text{ ml.} \\ \hline \end{array}$$

$$\begin{array}{r} 335 \text{ ml.} \\ - 240 \text{ ml.} \\ \hline \end{array}$$







TICK 3 ( ✓ ) THE CORRECT OPTION : (Multiple Choice Questions)

(a) Capacity is expressed in

metres ☐

grams ☐

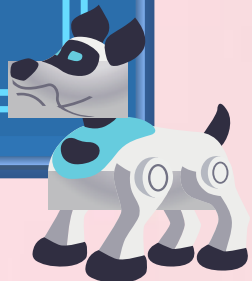
litres ☐

(b) The smaller capacities are measured in

litres ☐

milliliters ☐

grams ☐



(c) The symbol for kilogram is

k

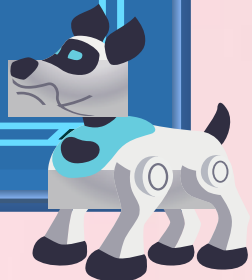
Kg

KI

(d) Indian money is in

rupees  paise

rupees and paise





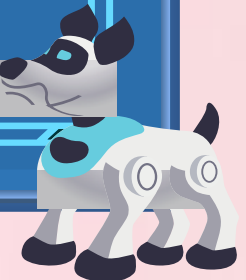
FILL In the blanks:

(a)  is the standard unit of length.

(b) 1 m =  cm.

(c)  is the standard unit of weight.

(d) 1 kg =  grams.







## MATCH THE FOLLOWING : Column A



## Column B

