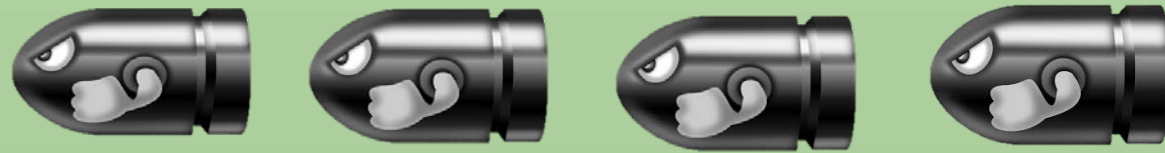


CLASS — 2



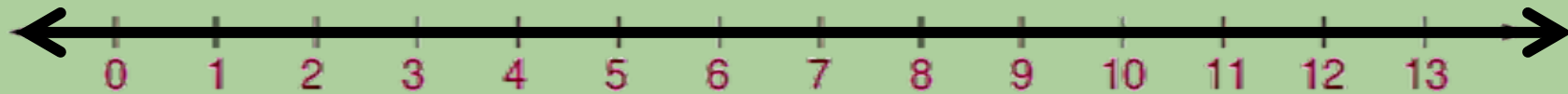
CHAPTER — 3

ADDITION





Add with the help of number line :



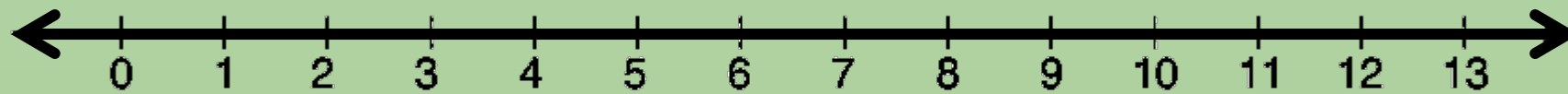
6

+

3

=



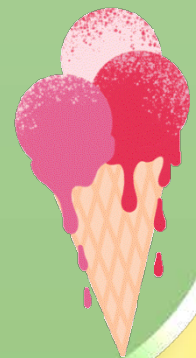


3

+

8

=





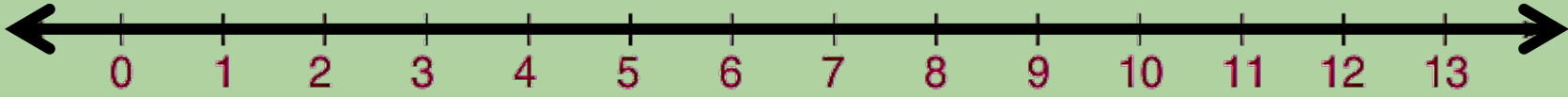
8

+

4

=





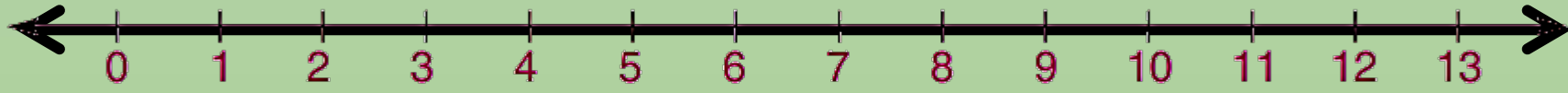
4

+

9

=





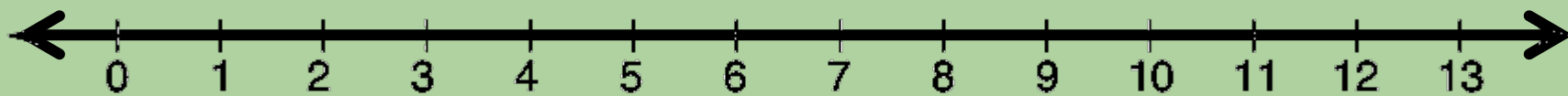
8

+

3

=





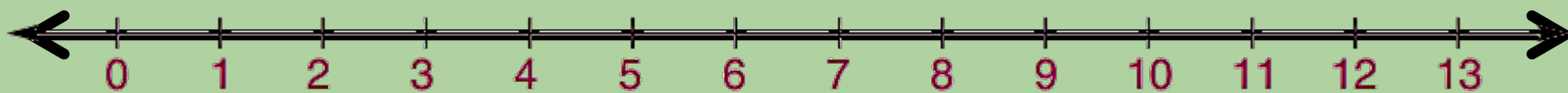
6

+

5

=





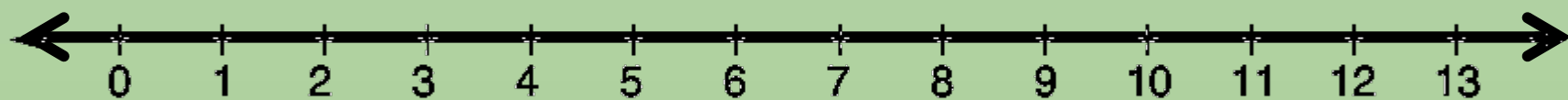
7

+

6

=



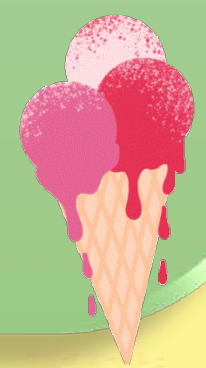


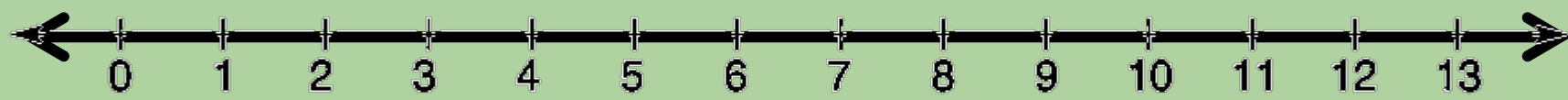
9

+

2

=





6

+

6

=





Add :

208 And 331

| H | T | O |
|---|---|---|
| 2 | 0 | 8 |
| 3 | 3 | 1 |
| | | |

Answer:



271 And 428

| H | T | O |
|---|---|---|
| 2 | 7 | 1 |
| 4 | 2 | 8 |
| | | |

Answer:



275 And 312

| H | T | O |
|---|---|---|
| 2 | 7 | 5 |
| 3 | 1 | 2 |
| | | |

Answer:



326 And 43

| H | T | O |
|---|---|---|
| 3 | 2 | 6 |
| 0 | 4 | 3 |
| | | |

Answer:



203 And 80

| H | T | O |
|---|---|---|
| 2 | 0 | 3 |
| 0 | 8 | 0 |
| | | |

Answer:



265 And 104

| H | T | O |
|---|---|---|
| 2 | 6 | 5 |
| 1 | 0 | 4 |
| | | |

Answer:

602 And 266

| H | T | O |
|---|---|---|
| 6 | 0 | 2 |
| 2 | 6 | 6 |
| | | |

Answer:




Write 'Yes' or 'No' :

1. $403 + 93 = 596$

2. $222 + 463 = 685$

3. $111 + 222 = 444$

4. $0 + 290 = 390$



5. $506 + 12 = 519$

No

Add:

| | H | T | O |
|---|---|---|---|
| | 2 | 3 | 5 |
| + | 3 | 2 | 2 |
| + | 3 | 3 | 1 |
| | | | |



| | H | T | O |
|---|---|---|---|
| | 7 | 1 | 2 |
| + | 2 | 0 | 3 |
| + | 0 | 4 | 4 |
| | | | |

| | H | T | O |
|---|---|---|---|
| | 2 | 4 | 0 |
| + | 4 | 0 | 2 |
| + | 2 | 3 | 4 |
| | | | |





Fill in the boxes :

$$14 \text{ tens} + 12 \text{ ones} = \boxed{16} \text{ tens} + \boxed{2} \text{ ones}$$

$$13 \text{ tens} + 21 \text{ ones} = \boxed{} \text{ tens} + \boxed{} \text{ ones}$$

$$7 \text{ tens} + 14 \text{ ones} = \boxed{} \text{ tens} + \boxed{} \text{ ones}$$



$$8 \text{ tens} + 10 \text{ ones} = \boxed{} \text{ tens} + \boxed{} \text{ ones}$$

Add:



| | | | | |
|-------|----------|----------|----------|-----------|
| | T | | O | |
| | 1 | | | |
| | 2 | | 5 | |
| + | 3 | | 8 | |
| <hr/> | | | | |
| | 6 | 1 | 3 | |
| <hr/> | | | | |
| 25 | + | 38 | = | 63 |



| | | | | |
|-------|----------|----|----------|--|
| | T | | O | |
| | | | | |
| | 4 | | 3 | |
| + | 2 | | 9 | |
| <hr/> | | | | |
| <hr/> | | | | |
| 43 | + | 29 | = | |



T

O

4

8

+ 4

4

$$48 + 44 = \boxed{}$$



T

O

4

8

+ 3

8

$$48 + 38 = \boxed{}$$

T

8

+ 4

O

6

4


$$86 + 44 = \square$$

T

9

+ 3

O

4

8

$$94 + 38 = \square$$



T

3

+ 2

O

3

9

$$33 + 29 = \square$$



T

2

+ 6

O

8

4

$$28 + 64 = \square$$



| | | |
|-------|--------------|--------------|
| | <div>T</div> | <div>O</div> |
| | 3 | 3 |
| + | 2 | 9 |
| <hr/> | | |

$33 + 29 =$



| | | |
|-------|--------------|--------------|
| | <div>T</div> | <div>O</div> |
| | 2 | 8 |
| + | 6 | 4 |
| <hr/> | | |

$28 + 64 =$





| | | |
|-------|--------------|--------------|
| | <div>T</div> | <div>O</div> |
| | 3 | 4 |
| + | 3 | 9 |
| <hr/> | | |

$34 + 39 =$



| | | |
|-------|--------------|--------------|
| | <div>T</div> | <div>O</div> |
| | 4 | 4 |
| + | 8 | 8 |
| <hr/> | | |

$44 + 88 =$





Add by expanded forms :

Add 48 and 29.

$$\begin{array}{rcl} 48 & = & \boxed{4} \text{ tens} + \boxed{8} \text{ ones} \\ + 29 & = & \boxed{2} \text{ tens} + \boxed{9} \text{ ones} \\ \hline \text{Sum} & = & \boxed{6} \text{ tens} + \boxed{7} \text{ ones} \\ & = & \boxed{7} \text{ tens} + \boxed{7} \text{ ones} \\ \therefore 48 + 29 & = & \boxed{77} \end{array}$$



Add 38 and 59.



$$\begin{array}{r} 38 = \square \text{ ten} + \square \text{ one} \\ + 59 = \square \text{ ten} + \square \text{ one} \\ \hline \end{array}$$

$$\begin{array}{l} \text{Sum} = \square \text{ ten} + \square \\ = \square \text{ ten} + \square \end{array}$$

$$\therefore 38 + 59 = \square$$



Add 65 and 89.



$$\begin{array}{r} 65 = \square \text{ ten} + \square \text{ one} \\ + 89 = \square \text{ ten} + \square \text{ one} \\ \hline \end{array}$$

$$\begin{array}{l} \text{Sum} = \square \text{ ten} + \square \\ = \square \text{ ten} + \square \end{array}$$

$$\therefore 65 + 89 = \square$$



Add 69 and 27.



$$\begin{array}{r} 69 = \square \text{ ten} + \square \text{ one} \\ + 27 = \square \text{ ten} + \square \text{ one} \\ \hline \end{array}$$

$$\begin{array}{l} \text{Sum} = \square \text{ ten} + \square \\ = \square \text{ ten} + \square \end{array}$$

$$\therefore 69 + 27 = \square$$



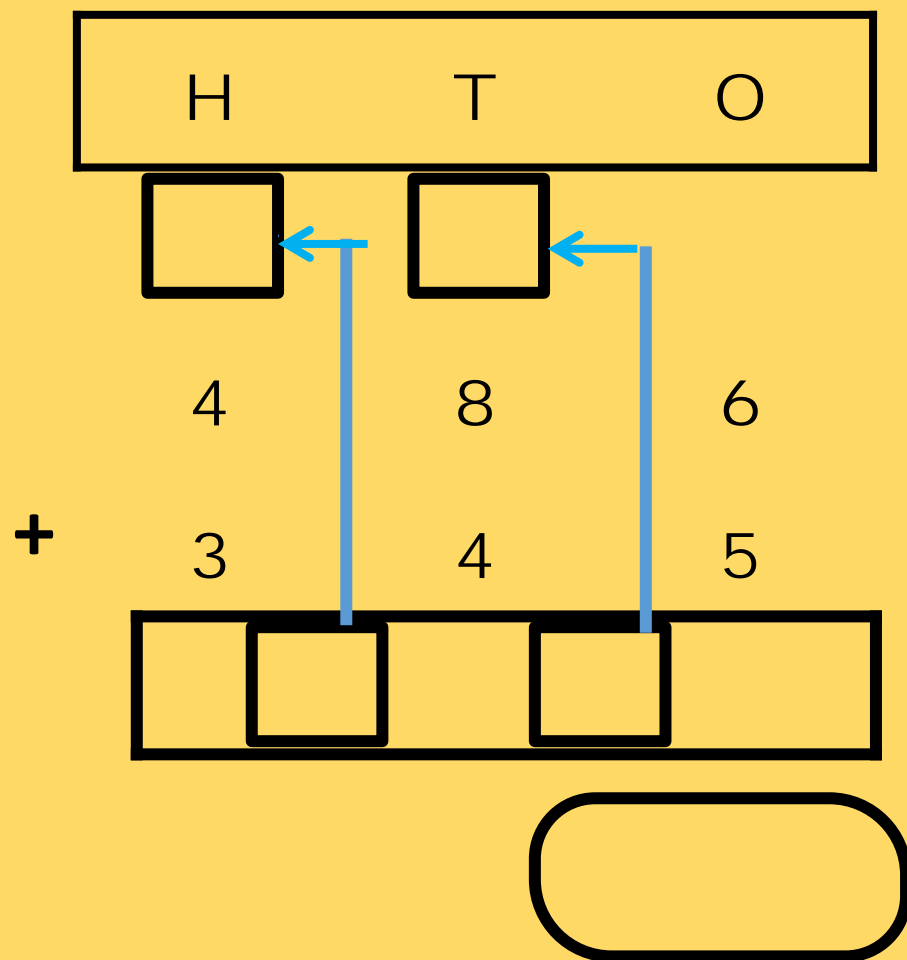
Problems on Addition :

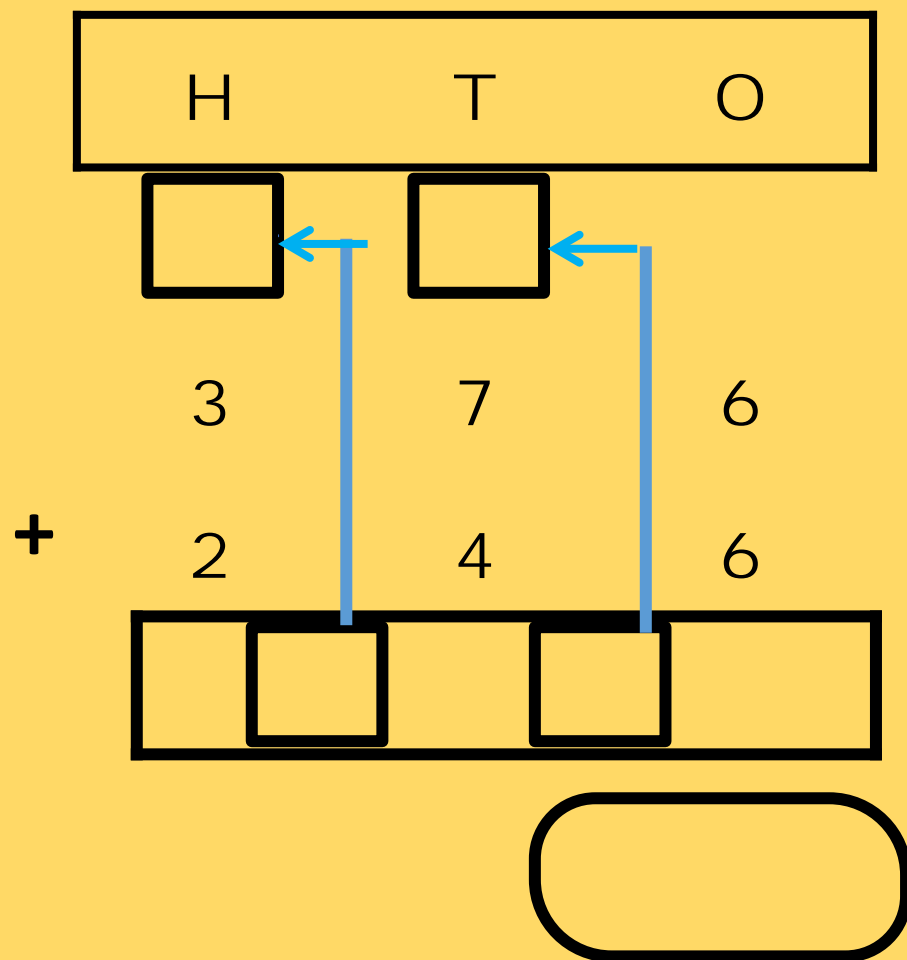


1. Ram has 38 pencils. Manoj has 46 pencils. How many pencils do they have altogether ?



2. Two baskets contain 68 and 95 fruits respectively. How many fruits are there in all in these baskets ?





Add:



$$\begin{array}{r} 4 \quad 3 \quad 4 \\ + 3 \quad 8 \quad 6 \end{array}$$

| | | |
|---|---|---|
| 8 | 2 | 0 |
|---|---|---|



$$\begin{array}{r} 5 \quad 4 \quad 5 \\ + 4 \quad 7 \quad 8 \end{array}$$

| | | |
|--|--|--|
| | | |
|--|--|--|

Add:



3 3 4

+ 3 8 4



2 2 4

+ 3 8 9

Add:



$$\begin{array}{r} 5 \quad 4 \quad 5 \\ + 2 \quad 9 \quad 7 \\ \hline \end{array}$$



$$\begin{array}{r} 5 \quad 4 \quad 8 \\ + 2 \quad 9 \quad 6 \\ \hline \end{array}$$

Add:



5 5 8

+ 1 8 7



4 8 7

+ 6 0 4



The answers given here are incorrect.
Write the correct answers.

$$\begin{array}{r} 4 \quad 3 \quad 6 \\ + 2 \quad 8 \quad 7 \\ \hline \end{array}$$

7 1 3

| | | |
|---|---|---|
| 7 | 2 | 3 |
|---|---|---|



$$\begin{array}{r} 6 \quad 1 \quad 3 \\ + 2 \quad 8 \quad 7 \\ \hline \end{array}$$

9 2 0

| | | |
|--|--|--|
| | | |
|--|--|--|



The answers given here are incorrect.
Write the correct answers.

$$\begin{array}{r} 4 \quad 7 \quad 6 \\ + 7 \quad 4 \quad 6 \\ \hline 12 \quad 3 \quad 2 \end{array}$$



$$\begin{array}{r} 4 \quad 0 \quad 8 \\ + 7 \quad 9 \quad 4 \\ \hline 11 \quad 9 \quad 2 \end{array}$$



The answers given here are incorrect.
Write the correct answers.

$$\begin{array}{r} 5 \quad 3 \quad 8 \\ + 2 \quad 9 \quad 4 \\ \hline 7 \quad 3 \quad 2 \end{array}$$



$$\begin{array}{r} 6 \quad 4 \quad 6 \\ + 2 \quad 8 \quad 4 \\ \hline 7 \quad 3 \quad 0 \end{array}$$



The answers given here are incorrect.
Write the correct answers.

$$\begin{array}{r} 7 \quad 3 \quad 4 \\ + 1 \quad 9 \quad 8 \\ \hline 8 \quad 3 \quad 2 \end{array}$$



$$\begin{array}{r} 8 \quad 0 \quad 7 \\ + 2 \quad 8 \quad 5 \\ \hline 10 \quad 9 \quad 1 \end{array}$$



Solve and fill in the placeholders.

1. A school has two shifts. There are 485 students in first shift and 456 in second shift. How many students are there in the school ?

SOLUTION : Number of students in :

First shift = 4 8 5

Second shift = 4 5 6

Total number of students :

| | | |
|---|---|---|
| | | |
| | | |
| 4 | 8 | 5 |
| 4 | 5 | 6 |
| 9 | 4 | 1 |



2. A school library has 521 books in English and 345 books in Hindi. How many books are there in the library ?

SOLUTION : Number of books in :

English =

Hindi =

Total number of books :

.....

+





3. In a cricket match Yogesh scored 113 runs in the 1st inning and 125 runs in the second inning. How many runs did he score ?

SOLUTION : Runs scored in :

First inning =

Second inning =

Total number of runs scored :



| |
|-------------|
| |
| + |
| <div></div> |



4. Ram bought three packets of toffees. Two packets had 48 toffees each. Third packet contained 56 toffees. How many toffees in all did Ram buy ?

SOLUTION : Number of toffees in :

First packet =

Second packet =

Third packet =

Total number of toffees :



.....

+.....



Thank
you

shutterstock



-
+

x
÷