

Life Cycle of an Insect

A. Choose the correct answer :

1. What is the first stage in the life cycle of a butterfly?

- A) Larva
- B) Pupa
- C) Egg
- D) Adult

2. During which stage does a caterpillar form a cocoon?

- A) Egg
- B) Pupa
- C) Adult
- D) Larva

3. What is the process of an insect changing its form during its life cycle called?

- A) Breathing
- B) Metamorphosis
- C) Growing
- D) Sleeping

B. Fill in the Blanks:

1. The life cycle of a butterfly begins with an _____.
2. In the pupa stage, the insect is covered in a _____.
3. An adult butterfly has colorful _____.

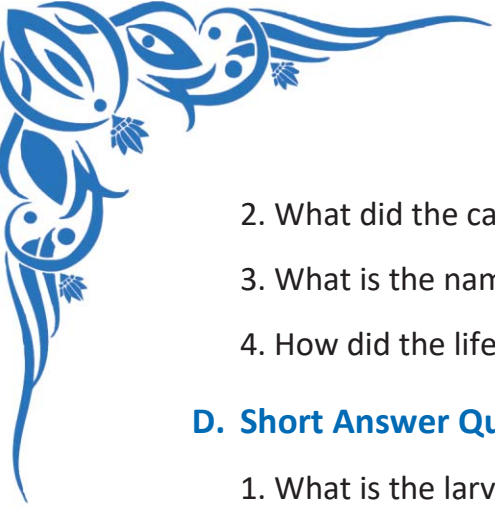
C. Case Study:

A group of students observed the life cycle of a butterfly in their school garden.

- They first saw small eggs on the leaves.
- After a few days, the eggs hatched into caterpillars (larva stage).
- The caterpillars ate leaves and grew bigger.
- Later, they formed a chrysalis (pupa stage) and stayed inside for several days.
- Finally, colorful butterflies emerged from the chrysalis and flew around the garden.

Case Study Questions:

1. What did the students first notice in the butterfly's life cycle?



2. What did the caterpillars eat during the larva stage?
3. What is the name of the protective covering formed during the pupa stage?
4. How did the life cycle end in this case study?

D. Short Answer Questions:

1. What is the larva stage of a butterfly called?
2. Name two insects that go through metamorphosis.
3. Why do caterpillars eat a lot of leaves during the larva stage?

E. Long Answer Questions:

1. Describe the four stages of a butterfly's life cycle.
2. How does metamorphosis help insects survive?
3. Compare the life cycle of a butterfly and a beetle. What are the similarities and differences?