

EXERCISE # 1

A. Single Choice Type Questions

- Q.1** Algae are –
 (A) Autotrophic (B) Heterotrophic
 (C) Both (D) None
- Q.2** Chlamydomonas is the example of -
 (A) Algae (B) Fungi
 (C) Lichens (D) None
- Q.3** Which class is called amphibians of the plant kingdom -
 (A) Thallophyta (B) Bryophyta
 (C) Pteridophyta (D) Gymnosperm
- Q.4** Example of pteridophyta is -
 (A) Selaginella (B) Cycas
 (C) Pinus (D) None
- Q.5** Cnidoblasts is characteristic feature of -
 (A) Coelenterata (B) Porifera
 (C) Protozoa (D) Arthropoda
- Q.6** Prawn (shrimp) is the example of -
 (A) Arthropoda (B) Annelida
 (C) Coelenterata (D) Protozoa
- Q.7** Four chambered heart is found in -
 (A) Draco (B) Hemidactylus
 (C) Tortoises and turtles (D) Rattlesnake
- Q.8** In mollusca respiratory organ is called -
 (A) Ctenidia (B) Lungs
 (C) Book-lungs (D) All the above
- Q.9** In larval stage which symmetry is present in echinodermata -
 (A) Radial (B) Biradial
 (C) Bilateral (D) None of these
- Q.10** Whittaker failed to give any place to one of the following in his classification -
 (A) Cyanobacteria (B) Virus
 (C) Slime moulds (D) all above
- Q.11** Parazoa includes -
 (A) Protozoans
 (B) Porifera
 (C) Parasites of invertebrates (mesozoa)
 (D) None above
- Q.12** Viruses are essentially made up of -
 (A) Proteins and nucleic acid
 (B) Proteins and carbohydrates
 (C) Lipids and nucleic acids
 (D) Starch, proteins and lipid
- Q.13** Prokaryotes are included in the group -
 (A) Monera (B) Basidiomycetes
 (C) Bryophytes (D) Tracheophyta
- Q.14** Four kingdom system of classification was given by -
 (A) Copeland (B) Whittaker
 (C) Linnaeus (D) Von Mohl
- Q.15** Which group of plants are called "Amphibians of plant world" -
 (A) Bryophyta (B) Gymnosperms
 (C) Algae (D) Fungi
- Q.16** Which of the following organism has characters of both animals and plants -
 (A) Blue-green algae (B) Euglena
 (C) Moss (D) Cycas
- Q.17** Vascular bundle is found in -
 (A) Thallophyta (B) Bryophyta
 (C) Pteridophyta (D) Lichens
- Q.18** A branch of biology which deals with the identification, nomenclature and classification of organisms is called -
 (A) Morphology (B) Ecology
 (C) Taxonomy (D) Phytogeography
- Q.19** Binomial nomenclature was introduced by -
 (A) John Ray (B) A. P. deCandolle
 (C) A. L. de Jussieu (D) Carolus Linnaeus

- Q.20** Plants with hidden reproductive organs are included in -
 (A) Gymnosperms (B) Angiosperms
 (C) Phanerogams (D) Cryptogams
- Q.21** The basic unit of classification is -
 (A) Family (B) Genus
 (C) Species (D) Order
- Q.22** Which of the following kingdoms includes many kinds of unicellular eukaryotic organisms?
 (A) Monera (B) Protista
 (C) Fungi (D) Animalia
- Q.23** Whale belongs to the class -
 (A) Pisces (B) Amphibia
 (C) Reptilia (D) Mammalia
- Q.24** Which group of animals are called 'flat worms'?
 (A) Porifera (B) Coelenterata
 (C) Platyhelminthes (D) Nematoda
- Q.25** Sweat and oil glands are present in the skin of -
 (A) Amphibians (B) Reptiles
 (C) Aves (D) Mammals

B. Multiple Choice Type Questions

- Q.26** You are identifying a plant that possesses seeds but not fruits. It may belong to -
 (A) Pteridophyta (B) Gymnosperm
 (C) Bryophyta (D) Angiosperm
- Q.27** Seeds are naked in -
 (A) Gymnosperm (B) Angiosperm
 (C) Both (A) and (B) (D) Monocots
- Q.28** Two chambered heart occurs in -
 (A) crocodiles (B) fish
 (C) aves (D) amphibians
- Q.29** Skeleton is made entirely of cartilage in -
 (A) Sharks (B) Tuna
 (C) Rohu (D) None of these
- Q.30** One of the following is not an Annelid -
 (A) Nereis (B) Earthworm
 (C) Leech (D) Urchins

EXERCISE # 2

A. Very Short Answer Types Questions

- Q.1 Name the group of plants which produce seeds but not fruits.
- Q.2 Name any two liverworts
- Q.3 Name the three major groups of the kingdom : Protista.
- Q.4 In which animal phylum body cavity appears for the first time ?
- Q.5 After which structure the phylum Echinodermata has been named ?
- Q.6 What is the basic unit of classification ?
- Q.7 Name the highest taxonomic category.
- Q.8 Define prokaryotes.
- Q.9 Which division is known as 'Amphibians of plant kingdom' ?
- Q.10 Name the reproductive organs of -
(i) Gymnosperms (ii) Angiosperms.
- Q.11 Name atleast two monocots and two dicot plants.
- Q.12 Name the group of vascular Cryptogams.
- Q.13 Which phylum includes segmented worms ?
- Q.14 Who proposed binomial nomenclature ?
- Q.15 Name two groups of warm blooded animals with four-chambered heart.

B. Short Answer Types Questions

- Q.16 What are bryophytes ?
- Q.17 Write important characters of viruses ?
- Q.18 What are lichens ?
- Q.19 Differentiate between dicotyledonae and monocotyledonae plants ?
- Q.20 What are the sub phylum of chordata ? Give examples.

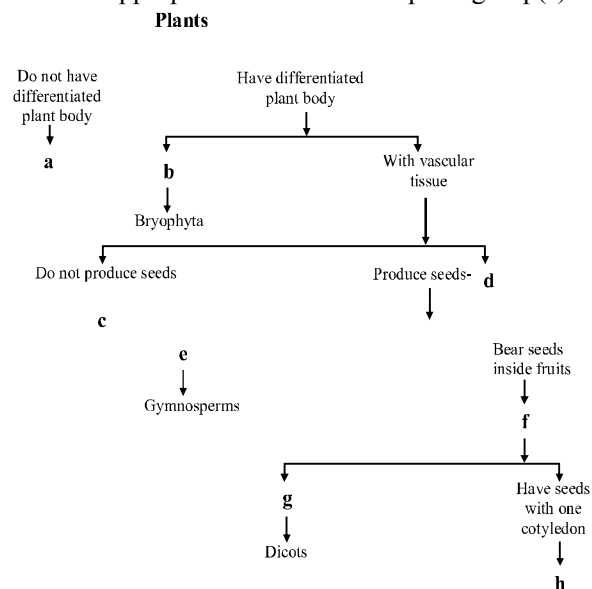
C. Long Answer Types Questions

- Q.21 Given their general characteristics of the vertebrates and list the distinguishing features of the classes under it.

- Q.22 List the distinguishing features of the phylum chordata ? Mention its classes with one example each.

D. Fill in the Blanks

- Q.23 Fill in the boxes given in figure, with appropriate characteristics/plant group(s).



E. Match the Column

- Q.24 Match items of column (A) with items of column (B) -

(A)	(B)
(a) Naked seed	(A) Angiosperms
(b) Covered seed	(B) Gymnosperms
(c) Flagella	(C) Bryophytes
(d) <i>Marchantia</i>	(D) <i>Euglena</i>
(e) <i>Marsilea</i>	(E) Thallophyta
(f) <i>Cladophora</i>	(F) Pteridophyta
(g) <i>Penicillium</i>	(G) Fungi

F. Give the examples for following

- Q.25 Given examples for the following :
- (a) Bilateral, dorsiventral symmetry is found in
- (b) Worms causing disease elephantiasis is
- (c) Open circulatory system is found in where coelomic cavity is filled with blood.
- (d) are known to have pseudocoelom