

SECOND SUMMATIVE ASSESSMENT : 2011-12

Subject : **MATHEMATICS**

Time : 1 hrs.

Class : **IV**

M.M. : **20**

Name Roll No.

Day & Date

Marks Obt.

 Inv. Sign.

PART - A

Q.1 State whether the following statement is True and False - **4x1=4**


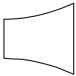

- (i) $\frac{4}{7} + \frac{3}{8} + \frac{1}{3}$ are the like fractions. []
- (ii) [] are reflection of each other. []
- (iii) Sun sets at 6:25 am daily. []
- (iv) 1 km = 1000 m. []

Q.2 Fill in the blanks :- **3x1=3**

- (a) 2, 4, 6, 8 are multiples of
- (b) 1 kg =g +g + g +g
- (c) 10 min after 3:15 am =

Q.3 Tick the correct option :- **5x1=5**

- (i) Which of these simple closed figure is also a polygon :-

(a) 
 (b) 
 (c) 
- (ii) 4½ Km is equal to -

(a) 4500 m
 (b) 4100 m
 (c) 4000 m
- (iii) 14:00 hours is equal to -

(a) 1 O'clock
 (b) 2 O'clock
 (c) 3 O'clock
- (iv) Factors of 19 are 1 and

(a) $17\frac{12}{7}$

(b) $19\frac{5}{8}$

(c) $21\frac{1}{4}$

(v) Which of these is an improper fraction :-

(a) $\frac{\quad}{\quad}$

(b) $\frac{6}{8}\frac{1}{8}$

(c) $\frac{8}{9}\frac{1}{9}$

Q.4 Very short question -

4x2=8

(a) Solve :-

(i) $\frac{\quad}{\quad} + \frac{\quad}{\quad} =$

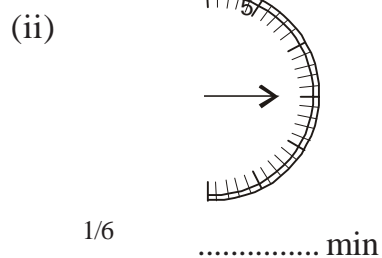
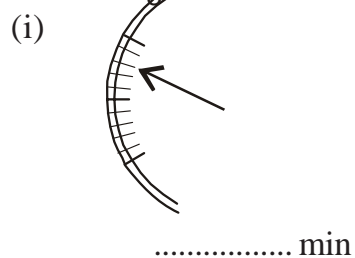
(ii) $\frac{\quad}{\quad} - \frac{\quad}{\quad} =$

(b) Draw mirror image of -

(i) B : 10

(ii) H :

(c) How many minutes is it past the hour.



(d) Convert these mixed number into improper fraction :-

(i) $5\frac{1}{2}$

(ii) 3

SECOND SUMMATIVE ASSESSMENT : 2011-12

Subject : MATHEMATICS

Time : 1½ hrs.

Class : IV

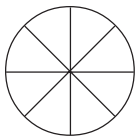
M.M. : 40

PART - B

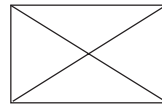
Q.1 Very Short :-

6x1=6

- (a) Write any four multiple of 7.
- (b) Shade according to fraction :-



$$\frac{3}{8}$$



$$\frac{1}{4}$$

- (c) Give radius of the circle if diameter is 16.m
- (d) Give diameter of a circle if radius is 100 cm.
- (e) Draw a line segment of 7 cm.
- (f) Is it daylight or darkness

2:05 am =

10.10 pm =

Q.2 Short question :-

4x2=8

- (a) Convert the following :-

5000 ml = Lt.

2¾ kg = gms.

- (b) Rewrite using 24 hour clock

6:30 am =

3:15 pm =

- (c) Make factor tree of -

(i) 21

(ii) 30

- (d) Find factors of 80

Long Questions :-

4x2½=10

- (1) Solve :-
- (a) Arrange in ascending order :-

10

15

13

12

8

7

15

(b) $\frac{6}{5}$ of a dozen

- (2) Name the parts of circle -

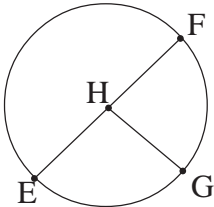
Centre =

Diameter =

Radius =

HF =

EH =



- (3) Find any two common multiples of 4, 6.
- (4)

(a) If cost of 1 kg of cherries is Rs. 30. What is the cost of 6 kg. of cherries.

(b) Rakesh walked 490 m from his house to the market and back again. What distance did he walk in all.

Very long questions :-

4x4=16

- (1) Find common factors of :-
- (a) 8, 18

(b) 10, 14
- (2) Solve -
- (i) An auditorium has 300 seats, if $\frac{1}{3}$ of the seats are empty. How many seats are empty.

(ii) Priya made cold drinkwith $\frac{7}{8}$ glass of water and $\frac{2}{8}$ glass of milk. How much cold drink did she make in all.
- (3)

(a) How many ml. in two spoonfuls of medicine that holds 5ml each.

(b) You have a packet of 500g. How many packets would you need to make.

(i) 1 kg

(b) 2 kg.
- (4) Calculate :-
- (i) How many days between Sept 20 to Oct 5. (Do not include Oct. 5)

(ii) How many hours are there between 11 am and 4 pm.