

Mathematics

(www.tiwariacademy.com)
(Chapter - 15) (Introduction to Graphs)
(Class - VIII)

Exercise 15.2

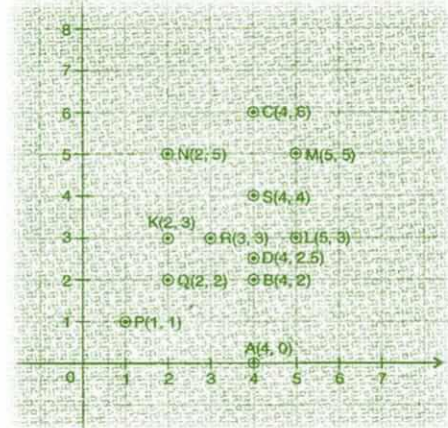
Question 1:

Plot the following points on a graph sheet. Verify if they lie on a line

- (a) A(4, 0), B(4, 2), C(4, 6), D(4, 2.5)
- (b) P(1, 1), Q(2, 2), R(3, 3), S(4, 4)
- (c) K(2, 3), L(5, 3), M(5, 5), N(2, 5)

Answer 1:

- (a) All points A, B, C and D lie on a vertical line.
- (b) P, Q, R and S points also make a line. It verifies that these points lie on a line.
- (c) These points do not lie in a straight line.

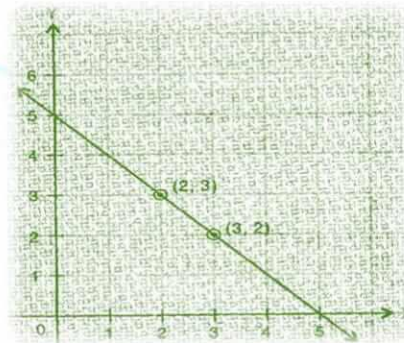


Question 2:

Draw the line passing through (2, 3) and (3, 2). Find the coordinates of the points at which this line meets the x-axis and y-axis.

Answer 2:

The coordinates of the points at which this line meets the x-axis at (5, 0) and y-axis at (0, 5).



Question 3:

Write the coordinates of the vertices of each of these adjoining figures.

Answer 3:

Vertices of figure OABC

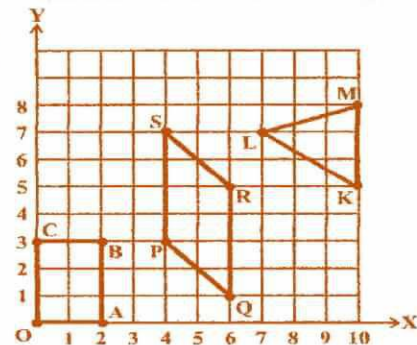
O (0, 0), A (2, 0), B (2, 3) and C (0, 3)

Vertices of figure PQRS

P (4, 3), Q (6, 1), R (6, 5) and S (4, 7)

Vertices of figure LMK

L (7, 7), M (10, 8) and K (10, 5)



Question 4:

State whether True or False. Correct that are false.

- (i) A point whose x coordinate is zero and y-coordinate is non-zero will lie on the y-axis.
- (ii) A point whose y coordinate is zero and x-coordinate is 5 will lie on y-axis.
- (iii) The coordinates of the origin are (0, 0).

Answer 4:

- (i) True
- (ii) False, it will lie on x-axis.
- (iii) True