

Unsolved Sample Paper

Class VII

Subject: Science

Max Marks: 80

Time: 3 Hours

GENERAL INSTRUCTIONS:

- Read the instructions carefully
- All the questions are compulsory.
- Question number 1 to 5 carries 1 mark each.
- Question number 6 is carries 2 marks each.
- Question number 7 carries 5 marks each.

1.) State whether the following statements are True or False: -

Marks: 5.0

- A. The water can be conserved by the method of Rainwater harvesting. (T)
- B. Magnesium hydroxide will turn blue litmus to red. (F)
- C. A physical change is usually reversible as no new substances are formed. (T)
- D. Moisture and air is essential for rust formation. (T)
- E. Vermin processing toilet is a type of toilet in which human excreta is treated through chemicals. (F)

2.) Fill in the blanks with appropriate answers: -

Marks: 5.0

- A. trees should be grown near sewage ponds to absorb surplus wastewater.
- B. is a technique of watering plants by making use of narrow tubings which deliver water directly at the base of the plant.
- C. A mirror changes the direction of light that falls on it. This property is calledof light.
- D. gas is produced when baking soda is added to vinegar.
- E. China rose gives colour with bases.

3.) Multiple Choice Questions (There can be more than one answer right):

Marks: 5.0

- A. Which of the following places is considered to be most unsafe during lightning?
 - a. Under a small tree if in a forest
 - b. Inside a house
 - c. Under a metal shed
 - d. Inside a bus

- B. The water seeps through the soil and fills the empty spaces and cracks deep below the ground through
 - a. Surface run off
 - b. Infiltration
 - c. Precipitation
 - d. Condensation

- C. Planting of trees on unused farm land, road and rail sides etc is called
 - a. Social forestry
 - b. Agroforestry
 - c. General forestry
 - d. Commercial forestry

- D. In budding, simple organisms reproduce by producing small outgrowths from their bodies. These outgrowths are known as _____.
 - a. Eyes
 - b. Axil
 - c. Scars
 - d. Buds

- E. Light from a candle is not visible when it is seen through a narrow bent tube, because
 - a. light is absorbed by the tube
 - b. light travels in a straight line
 - c. candle does not give light
 - d. a tube is narrow and light can't pass through it

4.) Very Short Answer Questions:

Marks: 5.0

- A. Name the acid found in
 - a. Spinach
 - b. Window cleaner
- B. Name the animal species from which angora wool is obtained.

C. What is the function of pollen grains in plants?

D. Write the mode of reproduction in

a. Rhizopus

b. Spirogyra

E. What will be the product formed when hydrochloric acid reacts with sodium hydroxide? Write the equation

5.) Match the items given in two columns: -

Marks: 20

A

Column A	Column B
Electromagnet	Heating effect of electric current
Large intestine	Breakdown into simple sugar
Saliva	Magnetic effect of electric current
Electric heater	Human excretory system
Ureter	Human digestive system

B

Column A	Column B
Shearing	Straightening and stretching the fibers
Combing	Removal of hair
Sorting	Washing of wool
Scouring	Separation of different hair types
Reeling of silk	Separating silk fibres from the cocoon

C

Column A	Column B
Red eyed frog	Modified teeth
Penguins	Webbed feet
Elephant	Sticky pads
Lion tailed macaque	Thick fur
Polar bear	Silver mane

D.

Column A	Column B
Cabbage	Sandy-loam soil
Wheat	Silty soil
Paddy	Clayey and loamy
Cotton	Loamy
Lentils	Clayey

6.) Short Answer Questions:

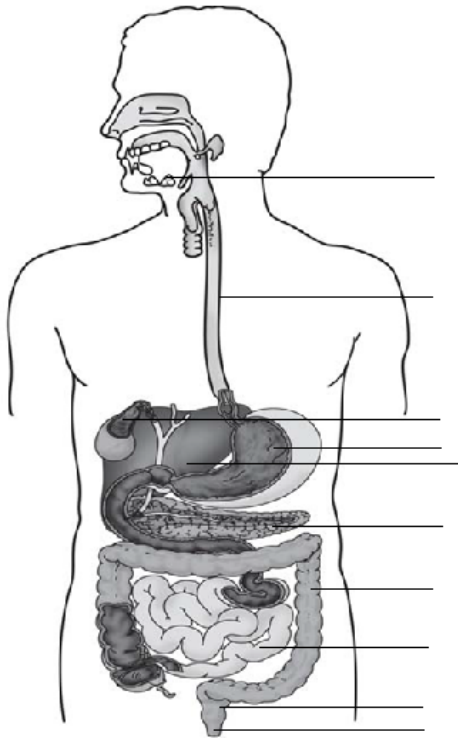
Marks: 20.0

- A. Why only mercury is used in thermometers? Give reasons
- B. Travelling at an average speed of 50 km/h, a car takes 3 hours to go from Chennai to Pondicherry. What is the distance between the two places?
- C. A desert is very hot in the day and very cold at night. Justify
- D. (a) Glucose (in Presence of oxygen) _____ + Water + _____
(b) Glucose (Absence of oxygen) _____ + Water + _____
- E. Explain why rusting of iron objects is faster in coastal areas than in deserts.
- F. Which of the following shows the heating effect of electric current?
 - a. Electric fuse
 - b. Electromagnet
 - c. Electric iron
 - d. Electric bell
- G. Mention two applications of concave mirrors.
- H. Give one word for the following
 - a. False feet of amoeba
 - b. Food is absorbed inside of amoeba
- I. A train traveling at 72 km/h crosses a platform in 30 seconds. What is the length of the platform in meters?
- J. Complete the following reaction
 - a. Magnesium (Mg) + Oxygen (O₂) →
 - b. Iron (Fe) + Oxygen (O₂ from the air) + water (H₂O) →

7.) Long Answer Questions: -

Marks: 20.0

- A. Label the human digestive system appropriately



- B.
- a. Explain the process of digestion in ruminants.
 - b. With the help of activity show that starch is a product of photosynthesis.
- C. Discuss in details the consequences of deforestation
- D. Give a detailed account on the working of an electric bell.