

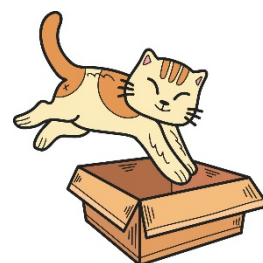
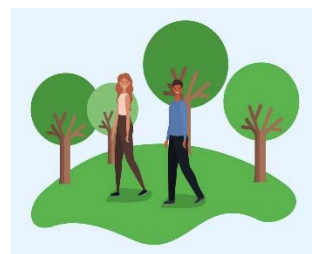
# Prepositions of movement and direction

## Definition:

Prepositions of movement and direction are prepositions that indicate the direction or movement of a person, object, or action in relation to another element in a sentence. They provide information about how something moves or is directed in space or time.

## Examples of prepositions of movement and direction:

1. **To:** Used to indicate movement toward a specific location or destination. Example: "**She walked to the park.**"
2. **From:** Used to indicate movement away from a specific location or origin. Example: "**He drove from New York to Boston.**"
3. **Into:** Used to indicate movement or direction toward the inside or interior of something. Example: "**The cat jumped into the box.**"
4. **Onto:** Used to indicate movement or direction onto the surface of something. Example: "**He placed the book onto the table.**"
5. **Across:** Used to indicate movement or direction from one side or location to the other. Example: "**She walked across the bridge.**"
6. **Along:** Used to indicate movement or direction parallel to something. Example: "**The river flows along the mountain range.**"
7. **Through:** Used to indicate movement or direction from one side to the other, often indicating passage or penetration. Example: "**He crawled through the narrow tunnel.**"
8. **Over:** Used to indicate movement or direction from one side or location to the other, often indicating crossing or covering. Example: "**She jumped over the fence.**"



## Usage tips for prepositions of movement and direction:

1. **Consider the context:** The appropriate preposition of movement or direction to use depends on the specific context of the sentence and the intended meaning.
2. **Be mindful of verb-preposition collocations:** Certain verbs are commonly used with specific prepositions of movement or direction, and it's important to learn and use them correctly. For example, "**go to**," "**come from**," "**get into**," "**climb onto**," etc.
3. **Use the correct form:** Pay attention to the correct form of the preposition based on the specific location, direction, or movement being indicated. For example, "**to**" is used for movement toward a specific location, while "**from**" is used for movement away from a specific location.
4. **Be aware of idiomatic expressions:** Some prepositions of movement and direction are used in idiomatic expressions that may have unique meanings or usage. For example, "**go through**" meaning to experience or endure, or "**over and above**" meaning in addition to.